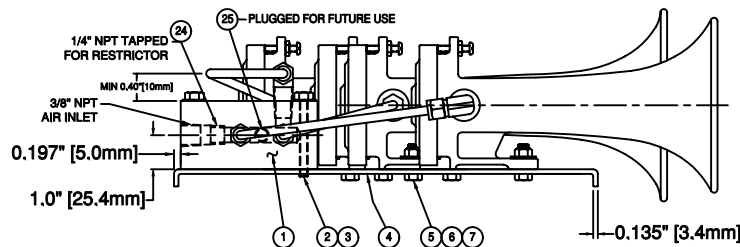


REF	PART	DESCRIPTION	MATERIAL	SPECIFICATION	QTY
1	78100	MANFOLD, 1/2"NPT AIR INLET	ALUMINUM 6061 T6	ASTM B221	1
2	11482	HEX HEAD CAP SCREW 1/4-20 x 2 1/4"	STAINLESS STEEL	ASTM F593C	4
3	11483	LOCK WASHER 1/4"	STAINLESS STEEL	ASME B18.21.1-91	4
4	78105	HORN MOUNTING PLATE, 0.135" THICK	STAINLESS STEEL	UNS S30400	1
5	40025	NYLOCK NUT 5/16-18"	STAINLESS STEEL	ASTM F594	15
6	13244	FLAT WASHER, 5/16"	STAINLESS STEEL	ASA B27.1	15
7	32120	HEX HEAD CAP SCREW 5/16-18x7/8"	STAINLESS STEEL	ASTM F593C	15
8	78140	1/4"O.D. TUBE, CS-4 AIR HORN	STAINLESS STEEL	UNS S30400	1
9	78142	1/4"O.D. TUBE, CS-3 AIR HORN	STAINLESS STEEL	UNS S30400	1
10	78110	STR. CONNECTOR, 14 TUBE x 1/4"NPT	PLAT'D FORGED STEEL	DIN 2353 and 3859	6
11	78144	1/4"O.D. TUBE, CS-1 AIR HORN	STAINLESS STEEL	UNS S30400	1
12	78146	1/4"O.D. TUBE, CS-5 AIR HORN	STAINLESS STEEL	UNS S30400	1
13	36924	PAN HEAD SL MACH SCREW, 10-24x1"	STAINLESS STEEL	ASTM F593C	5
14	36928	HEX NUT, 10-24	STAINLESS STEEL	ASTM F594	5
15	78148	1/4"O.D. TUBE, CS-2 AIR HORN	STAINLESS STEEL	UNS S31600	1
16	78115	ELBOW, 1/4 TUBE X 1/4"NPT	PLAT'D FORGED STEEL	DIN 2353 and 3859	4
17	31003	DIAPHRAGM DISC	STAINLESS STEEL	UNS S30100	5
18	36209	DIAPHRAGM CAP	ANODIZED ALUMINUM	BSI 1490 LM25 TF	5
19	36201	BELL BODY, CS-1, 311 Hz $\pm$ 4%	ANODIZED ALUMINUM	BSI 1490 LM25 TF	1
20	36202	BELL BODY, CS-2, 370 Hz $\pm$ 4%	ANODIZED ALUMINUM	BSI 1490 LM25 TF	1
21	36293	BELL BODY, CS-3, 440 Hz $\pm$ 4%	ANODIZED ALUMINUM	BSI 1490 LM25 TF	1
22	36294	BELL BODY, CS-4, 494 Hz $\pm$ 4%	ANODIZED ALUMINUM	BSI 1490 LM25 TF	1
23	36205	BELL BODY, CS-5, 622 Hz $\pm$ 4%	ANODIZED ALUMINUM	BSI 1490 LM25 TF	1
* 24	20980	RESTRICTOR, 3/16" ORIFICE	STAINLESS STEEL	UNS S30400	1
** 25	18225	PIPE PLUG, 1/8" NPT	STAINLESS STEEL	UNS S30400	1

\* ONLY SUPPLIED IF LOUDNESS MUST BE REDUCED

\*\* MAY BE REPLACED WITH VENT PLUG IF LOUDNESS MUST BE REDUCED



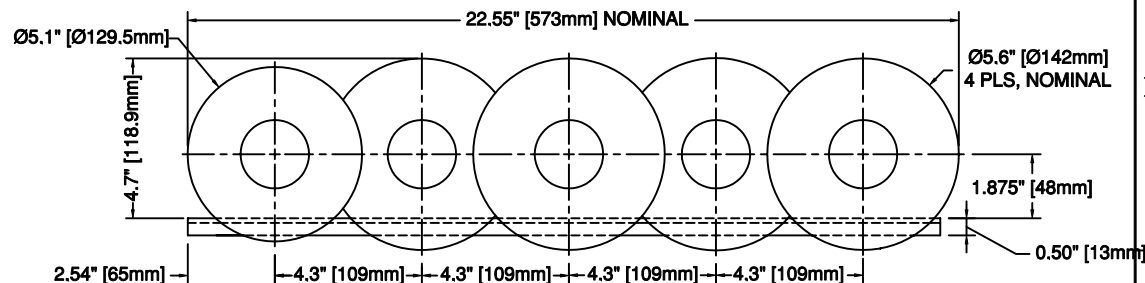
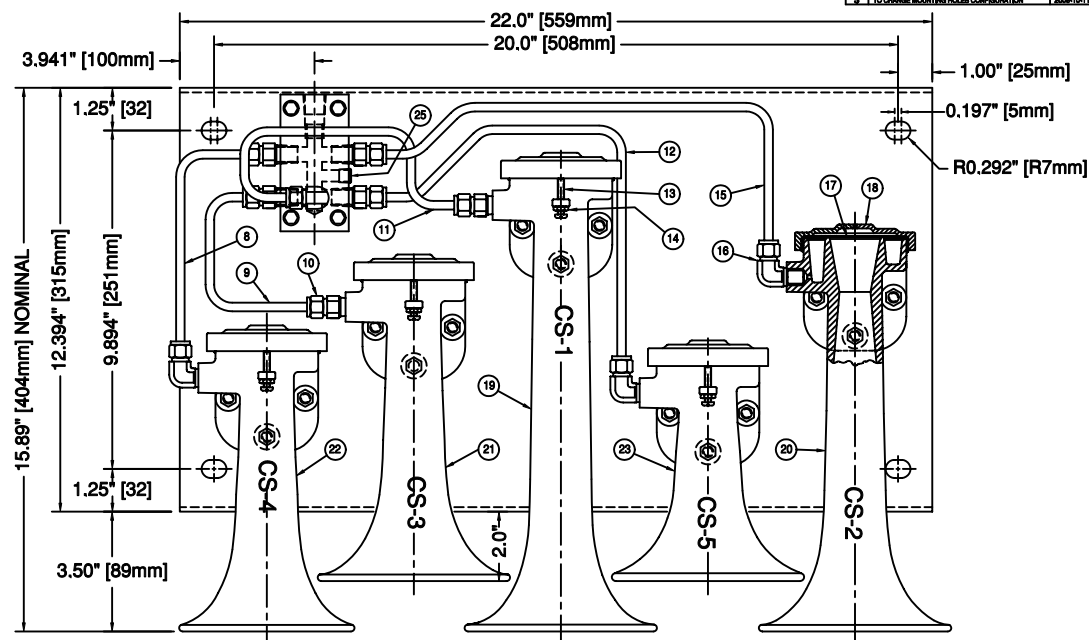
SPECIAL NOTES: ALL STAINLESS STEEL TUBING ARE TO BE AT LEAST 10mm ABOVE METAL SURFACES TO PREVENT RUBBING DURING SERVICE  
THE USE OF SEALING TAPE ON PIPE THREAD CONNECTION IS PROHIBITED

SPL(LOUDNESS): 139  $\pm$  1 dB(A) ON ALL PASS @ 1 METER BLOWING WITH  
9 BARS [130 PSIG] AIR PRESSURE, 70 SCFM (33 L/SEC) AIR CONSUMPTION.

OPERATING PRESSURE RANGE: 2 TO 11 BARS [30 TO 160 PSIG].

OPERATING TEMPERATURE RANGE: -40°C TO 80°C (-40°F TO 185°F) ON DRY AIR.

NIPPON SHARYO PART NUMBER 345207



# CONFIDENTIAL

INFORMATION CONTAINED HEREIN IS CONFIDENTIAL. IT IS THE PROPERTY OF AIRCHIME MFG. CO. LTD. IT IS TO BE USED SOLELY FOR THE PURPOSE PROVIDED, AND IT IS NOT TO BE DISCLOSED TO OTHERS WITHOUT THE PRIOR WRITTEN CONSENT OF AIRCHIME MANUFACTURING COMPANY LIMITED.

© Copyright Airchime Mfg. Co. Ltd.

## CONTRACT NUMBER

CUSTOMER:

VIRGINIA RAILWAY EXPRESS/  
NIPPON SHARYO USA

DRAWN BY: DATE (Y/M/D)

2.2.5. 2005-10-03

CHECKER: DESIGNED BY:

M.B. 2.2.5.

DRAWING APPROVED: V.A.M.

DRAWING TYPE:

ASSEMBLY



AIRCHIME MANUFACTURING CO. LTD.

LANGLEY, B.C. CANADA

V4W 3S8

**MODEL C-5A-CWP**  
**ASSEMBLY AND DIMENSIONS**  
FIVE CHIME AIR HORNS WITH MOUNTING PLATE

SIZE  
B NSCM  
36575

**79110**

SCALE: NONE UNIT WT: 10.6 KG SHEET: 1 OF 1