

REVISIONS			
REV	DESCRIPTION	DATE (YR-MO-DA)	APPROVED

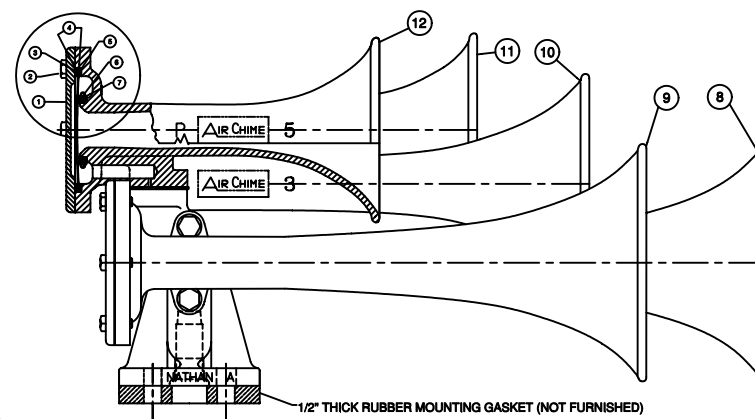
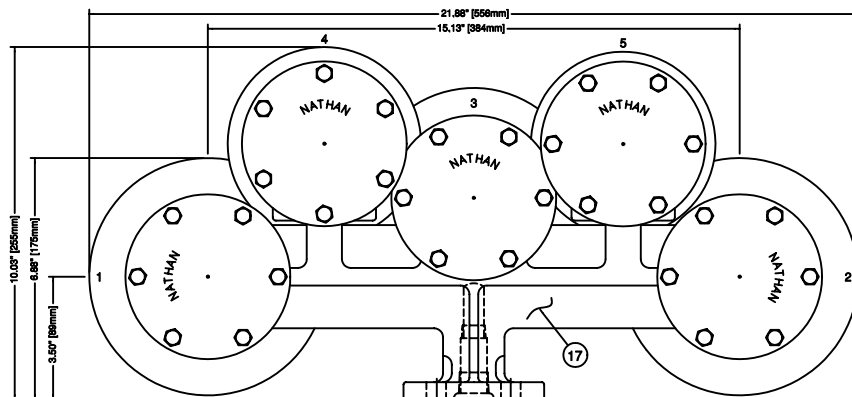
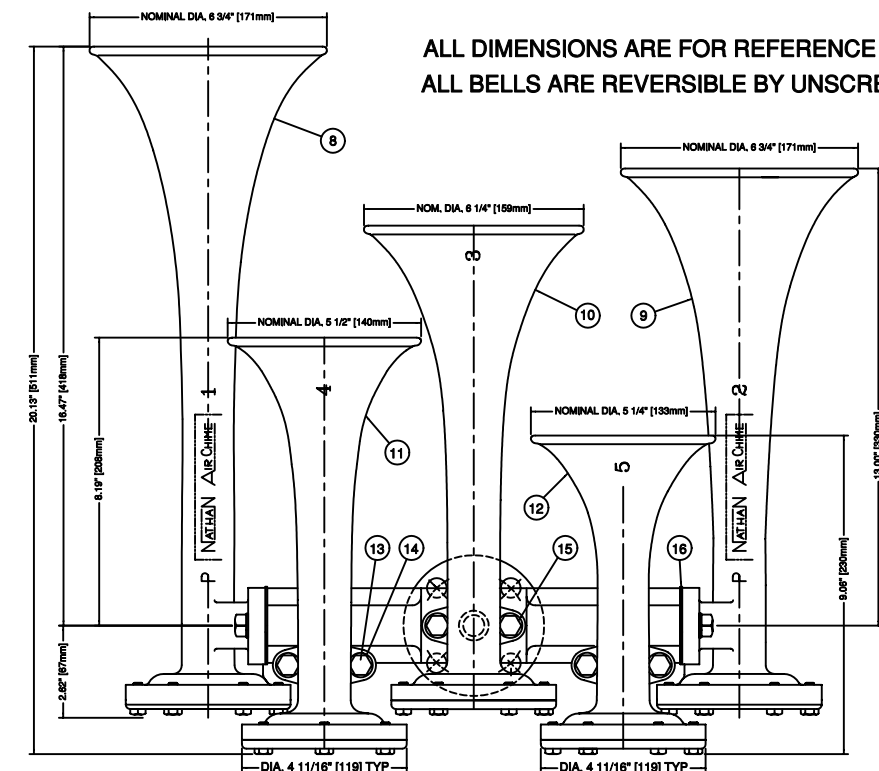
ALL DIMENSIONS ARE FOR REFERENCE ONLY, UNLESS OTHERWISE SPECIFIED
ALL BELLS ARE REVERSIBLE BY UNSCREW REFERENCE 13, HEX SCREW

* REBUILD KIT, PARTS WILL BE FURNISHED ONLY AS A PACKAGE DIAPHRAGM ASSEMBLY, KIT NUMBER WH-SA-61 (5 REQUIRED)

WHEN ASSEMBLING HORN, IT IS IMPORTANT THAT THE RUBBER DIAPHRAGM SEAT (C-21067) BE ASSEMBLED WITH THE BEVELLED SIDE OF THE SEAT IN THE DIRECTION OF THE HORN CAP, ALSO THAT THE THIN RUBBER GASKET (C-21069) BE PLACED FIRST & LOCATED ON THE SIDE OF THE SEAT

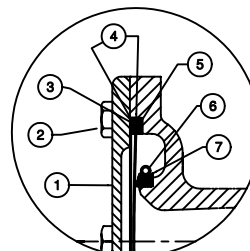
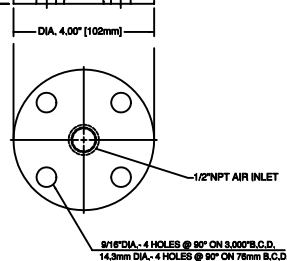
REF	PART No.	DESCRIPTION	MATERIAL	SPECIFICATION	QTY
1	C-21065	HORN DIAPHRAGM CAP	CAST ALUMINUM	UNS A935620	5
2	10499	HEX HEAD CAP SCREW, 1/4-20x3/4"	STAINLESS STEEL	ASTM F593C	30
* 3	C-21068	THICK GASKET 0.125"	BUNA N COMPOUND	ASTM D2000 BF	5
* 4	C-21070	DIAPHRAGM DISC, 0.008"	STAINLESS STEEL	UNS S30100	10
* 5	C-21069	THIN GASKET, 0.0625"	BUNA N COMPOUND	ASTM D2000 BF	5
6	C-21072	SEAT RETAINER	STAINLESS STEEL	ASTM A313	5
* 7	C-21067	SEAT (THROAT)	BUNA N COMPOUND	ASTM D2000 BF	5
8	C-21056	HORN BODY, P-1A, 277 Hz	CAST ALUMINUM	UNS A93562	1
9	C-21057	HORN BODY, P-2A, 330 Hz	CAST ALUMINUM	UNS A93562	1
10	C-21058	HORN BODY, P-3A, 392 Hz	CAST ALUMINUM	UNS A93562	1
11	C-21059	HORN BODY, P-4A, 440 Hz	CAST ALUMINUM	UNS A93562	1
12	C-21060	HORN BODY, P-5A, 554 Hz	CAST ALUMINUM	UNS A93562	1
13	30119	HEX HEAD CAP SCREW 3/8-16x1.5"	STAINLESS STEEL	ASTM F593C	8
14	30122	LOCK WASHER	STAINLESS STEEL	ASME B18.21.1	10
15	40054	HEX HEAD CAP SCREW 3/8-16x2.25"	CAST ALUMINUM	ASTM F593C	2
16	C-21063	HORN BASE GASKET	CORK NEOPRENE	COMMERCIAL	5
17	C-21098	FIVE TONE BASE, LOW PROFILE	CAST ALUMINUM	UNS A93562	1

NOTE: SEE BULLETIN NUMBER 587 FOR INSTALLATION AND MAINTENANCE INSTRUCTIONS



HORNS FUND. FREQUENCIES:

- #1 "C" SHARP 277 Hz \pm 4%
- #2 "E" NATURAL 330 Hz \pm 4%
- #3 "G" NATURAL 392 Hz \pm 4%
- #4 "A" NATURAL 440 Hz \pm 4%
- #5 "C" SHARP 554 Hz \pm 4%



SECTION "BB"
SCALE: 2X

CONFIDENTIAL

INFORMATION CONTAINED HEREIN IS CONFIDENTIAL, IT IS THE PROPERTY OF AIRCHIME MFG. CO. LTD., IT IS TO BE USED SOLELY FOR THE PURPOSE PROVIDED, AND IT IS NOT TO BE DISCLOSED TO OTHERS WITHOUT THE PRIOR WRITTEN CONSENT OF AIRCHIME MANUFACTURING COMPANY LIMITED.

© Copyright Airchime Mfg. Co. Ltd.

SALES ORDER NUMBER:

CUSTOMER:

DRAWN BY:

DATE (YR-MO-DA)

CHECKER:

ENGINEER

DRAWING APPROVAL

TYPE OF DRAWING:

ASSEMBLY

NATHAN / AIRCHIME®
NATHAN AIRCHIME INC
MICRO PRECISION GROUP

MODEL P-12345

FIVE TONE LOCOMOTIVE AIR HORN, LOW PROFILE

SIZE: A

DWG No: **WH-5405-5**

SCALE: NONE

UNIT WT: 24 LBS

SHEET: 1 OF 1