

#### NOTES:

##### 1. HORNS FUND. FREQUENCIES AS FOLLOWS:

BELL #1 "C" SHARP 277 Hz ±4%  
 BELL #2 "E" NATURAL 330 Hz ±4%  
 BELL #4 "A" NATURAL 440 Hz ±4%

ALL BELLS ARE REVERSIBLE

##### 2. AIR PRESSURE AT THE BASE OF THE WHISTLE FOR MODULATED LOUDNESS TO BE NOT LESS THAN 10 P.S.I. AT TEST PORT WHEN WHISTLE IS BLOWING. (WITHOUT RESTRICTOR)

##### 3. ALL OBSTRUCTIONS WHICH MIGHT ACT AS BARRIERS ARE TO BE BELOW A 10° OBSTRUCTION LINE.

##### 4. FOR FULL AND MODULATED TONES USE NATHAN AIR WHISTLE VALVE GA-5199.

##### 5. THE DISTANCE BETWEEN THE WHISTLE VALVE AND THE WHISTLE SHOULD BE AS SHORT AS POSSIBLE SO AS TO GIVE QUICK RESPONSE TO THE WHISTLE VALVE.

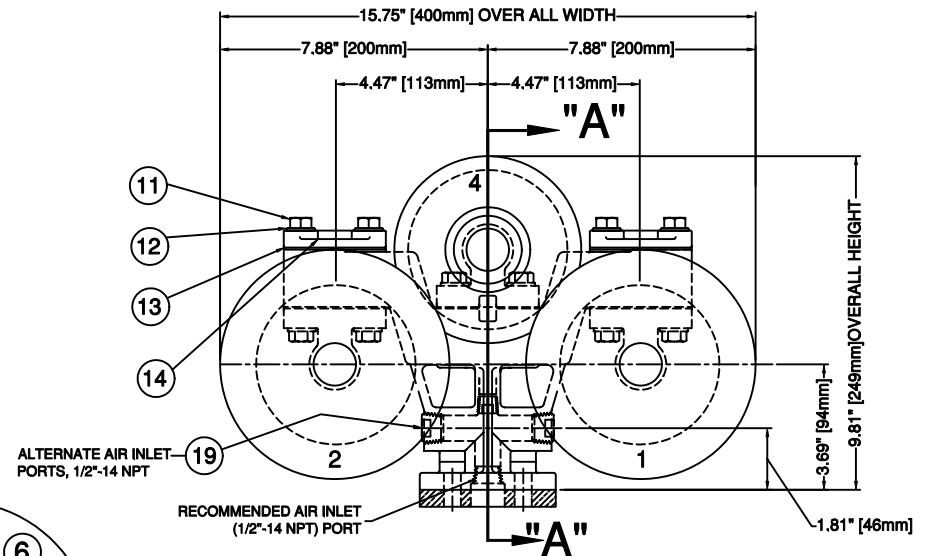
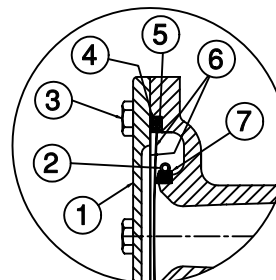
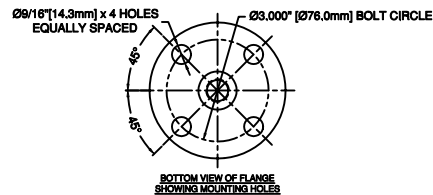
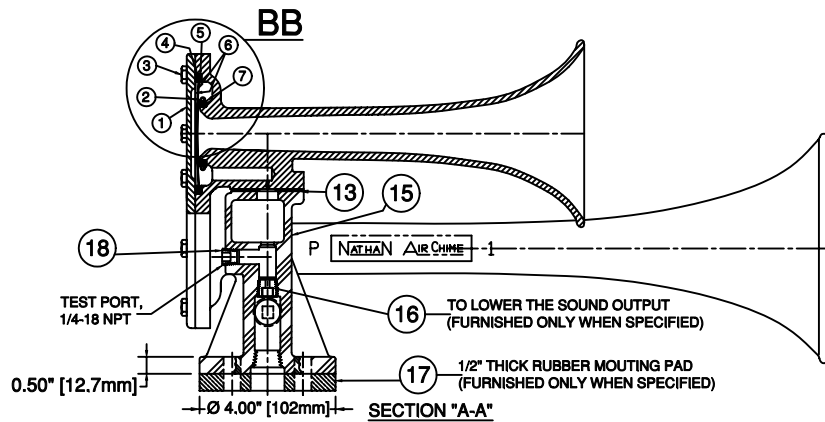
##### 6. TO REDUCE THE TRANSMISSION OF VIBRATION TO THE CAB IT IS RECOMMENDED THAT A 1/4" THICK RUBBER GASKET BE PLACED BETWEEN THE WHISTLE FLANGE AND THE MOUNTING FLANGE.

##### 7. THE FILTER TO BE USED SHOULD BE OF SUFFICIENT CAPACITY TO KEEP THE PRESSURE DROP TO A MINIMUM

##### 8. WHEN SERVICING & ASSEMBLING HORNS, IT IS IMPORTANT THAT THE RUBBER DIAPHRAGM SEAT (REF. 7) ASSEMBLED WITH THE BEVELED SIDE OF SEAT IN THE DIRECTION OF THE HORN CAP, ALSO THAT THE THIN RUBBER GASKET (.0625") BE PLACED FIRST AND ON THE SEAT SIDE.

REVISIONS					
REV	DESCRIPTION	DATE	BY	CHKD	APPV
1	C-21065				
2	C-21072				
3	10499				
4	C-21068				
5	C-21069				
6	C-21070				
7	C-21067				
8	C-21056A				
9	C-21057A				
10	C-21059A				
11	30119				
12	30122				
13	C-21063				
14	C-21062				
15	C-21061A				
16	C-21073-5				
17	C-21075				
18	C-20966-3				
19	C-20966-5				

★ REPAIR KIT FURNISHED AS A PACKAGE DIAPHRAGM ASSEMBLY ONLY, KIT NUMBER WH-SA-61  
 REFER TO BULLETIN 587 FOR INSTALLATION AND MAINTENANCE INSTRUCTIONS



#### CONFIDENTIAL

INFORMATION CONTAINED HEREIN IS CONFIDENTIAL, IT IS THE PROPERTY OF AIRCHIME MFG. CO., LTD. IT IS TO BE USED SOLELY FOR THE PURPOSE PROVIDED, AND IT IS NOT TO BE DISCLOSED TO OTHERS WITHOUT THE PRIOR WRITTEN CONSENT OF AIRCHIME MANUFACTURING COMPANY LIMITED.

CONTRACT NO.:

CUSTOMER:

REBPAW BY:

CHECKER:

FINISH:

UNLESS OTHERWISE SPECIFIED

DATE (YR-MO-DA)

DESIGNED BY

UNLESS OTHERWISE SPECIFIED

**NATHAN / AIRCHIME®**  
 NATHAN AIRCHIME INC.  
 MICRO PRECISION GROUP, CT, USA

MODEL P142A THREE TONE AIR HORN  
 1B4T2B, HIGH PROFILE CONFIGURATION

DRAWING TYPE: ASSEMBLY

DRAWING NUMBER: WH-5403-1A

SCALE: NONE UNIT WT: 7KG [14.5 LBS] SHEET: 1 OF 1