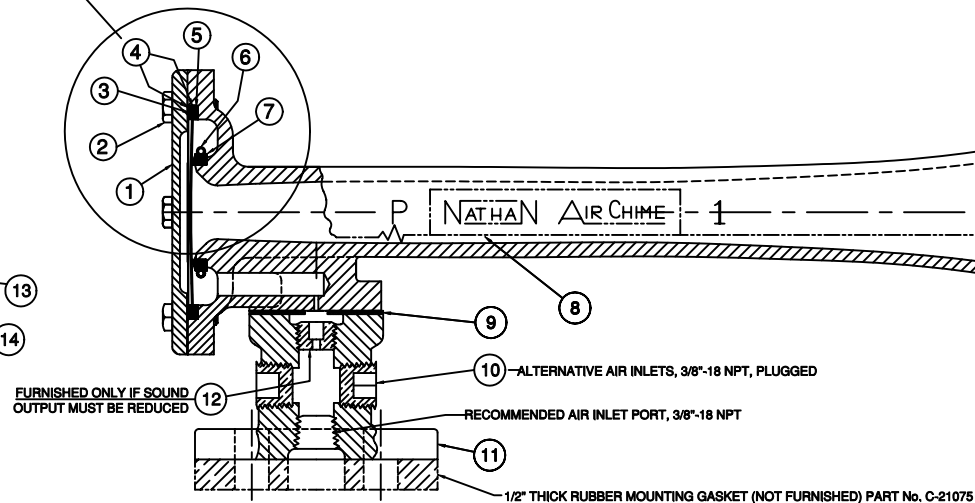
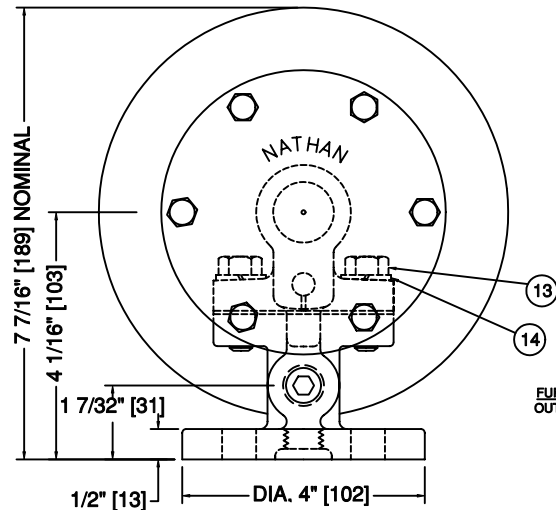
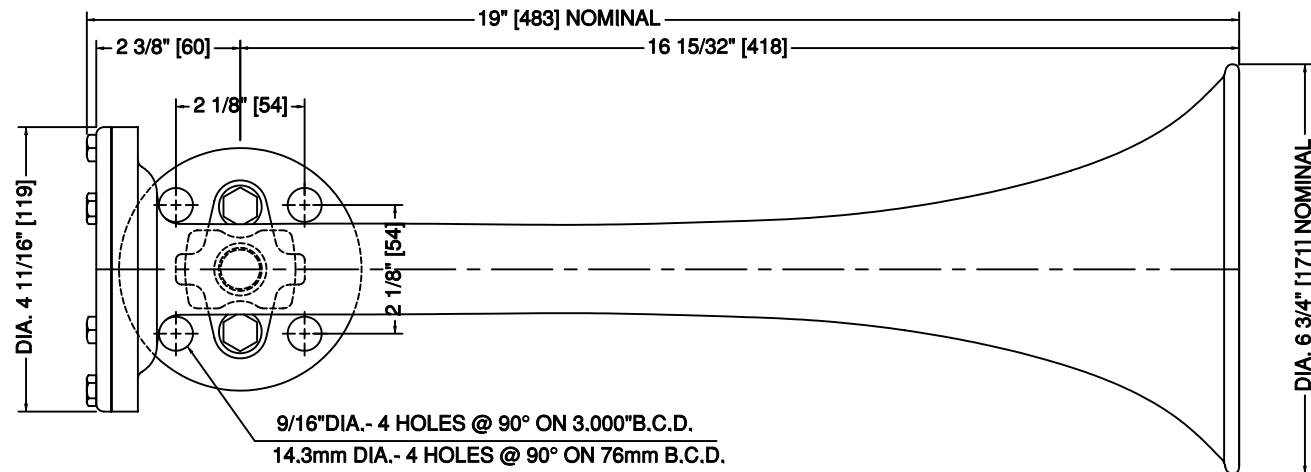
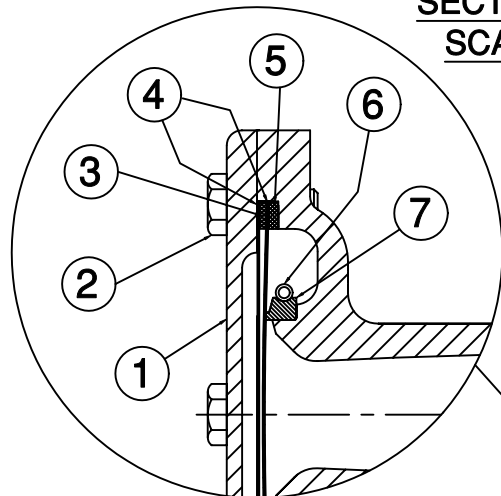


SECTION "BB"

SCALE: 2X

REVISIONS			
REV	DESCRIPTION	DATE (YR-MO-DA)	APPROVED



* REBUILD KIT, PARTS WILL BE FURNISHED ONLY AS A PACKAGE DIAPHRAGM ASSEMBLY, KIT NUMBER WH-SA-61-A WHEN SERVICING & ASSEMBLING HORN, IT IS IMPORTANT THAT THE RUBBER DIAPHRAGM SEAT (C-21067) BE ASSEMBLED WITH THE BEVELLED SIDE OF THE SEAT IN THE DIRECTION OF THE HORN CAP, ALSO THAT THE THICK RUBBER GASKET 0.125" (C-21068) BE PLACED FIRST ON THE SEAT SIDE (SEE BULLETIN 585).

REF	PART No.	DESCRIPTION	MATERIAL	SPECIFICATION	QTY
1	C-21065	HORN DIAPHRAGM CAP	CAST ALUMINUM	UNS A935620	1
2	10499	HEX HEAD CAP SCREW, 1/4-20x3/4	STAINLESS STEEL	ASTM F593C	6
* 3	C-21069	THIN GASKET, 0.0625"	BUNA N COMPOUND	ASTM D2000 BF	1
* 4	C-21170	DIAPHRAGM DISC, 0.018"	STAINLESS STEEL	UNS S30100	2
* 5	C-21068	THICK GASKET 0.125"	BUNA N COMPOUND	ASTM D2000 BF	1
6	C-21072	SEAT RETAINER	STAINLESS STEEL	ASTM A313	1
* 7	C-21067	SEAT (THROAT)	BUNA N COMPOUND	ASTM D2000 BF	1
8	C-21056A	HORN BODY, P1A, 277Hz, "C" Sharp	CAST ALUMINUM	UNS A93562	1
9	C-21063	HORN GASKET	CORK NEOPRENE	COMMERCIAL	1
10	20914	PIPE PLUG, 3/8"-18 NPT	PLATED ALLOY STEEL	COMMERCIAL	2
11	C-21064A	SINGLE TONE PEDESTAL (BASE)	CAST ALUMINUM	UNS A93562	1
12	C-21073-1	RESTRICTOR (NOT FURNISHED)	STAINLESS STEEL 301	UNS S30100	1
13	85224	HEX HEAD CAP SCREW 3/8-16x1.25	STAINLESS STEEL	ASTM F593C	2
14	30122	LOCK WASHER	STAINLESS STEEL	ASME B18.21.1	2

CONFIDENTIAL

INFORMATION CONTAINED HEREIN IS CONFIDENTIAL, IT IS THE PROPERTY OF AIRCHIME MFG. CO. LTD., IT IS TO BE USED SOLELY FOR THE PURPOSE PROVIDED, AND IT IS NOT TO BE DISCLOSED TO OTHERS WITHOUT THE PRIOR WRITTEN CONSENT OF AIRCHIME MANUFACTURING COMPANY LIMITED.

© Copyright Airchime Mfg. Co. Ltd.

SALES ORDER NUMBER:

CUSTOMER:

DRAWN BY: *L.H.T.* DATE (YR-MO-DA) 2008-08-26

CHECKER: *J.L.* ENGINEER: *R.E.S.*

DRAWING APPROVAL: *J.L.*

TYPE OF DRAWING:

ASSEMBLY

NATHAN / AIRCHIME®
NATHAN AIRCHIME INC.
MICRO PRECISION GROUP, CT, USA

MODEL P1A
SINGLE TONE AIR HORN, 277 Hz±4%

SIZE A DRAWING NUMBER: **WH-5435-2A**

SCALE: NONE UNIT WT: 6.0 LBS SHEET: 1 OF 1