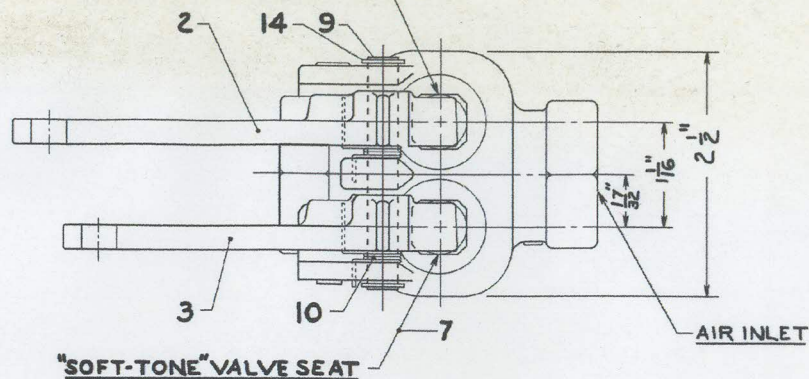
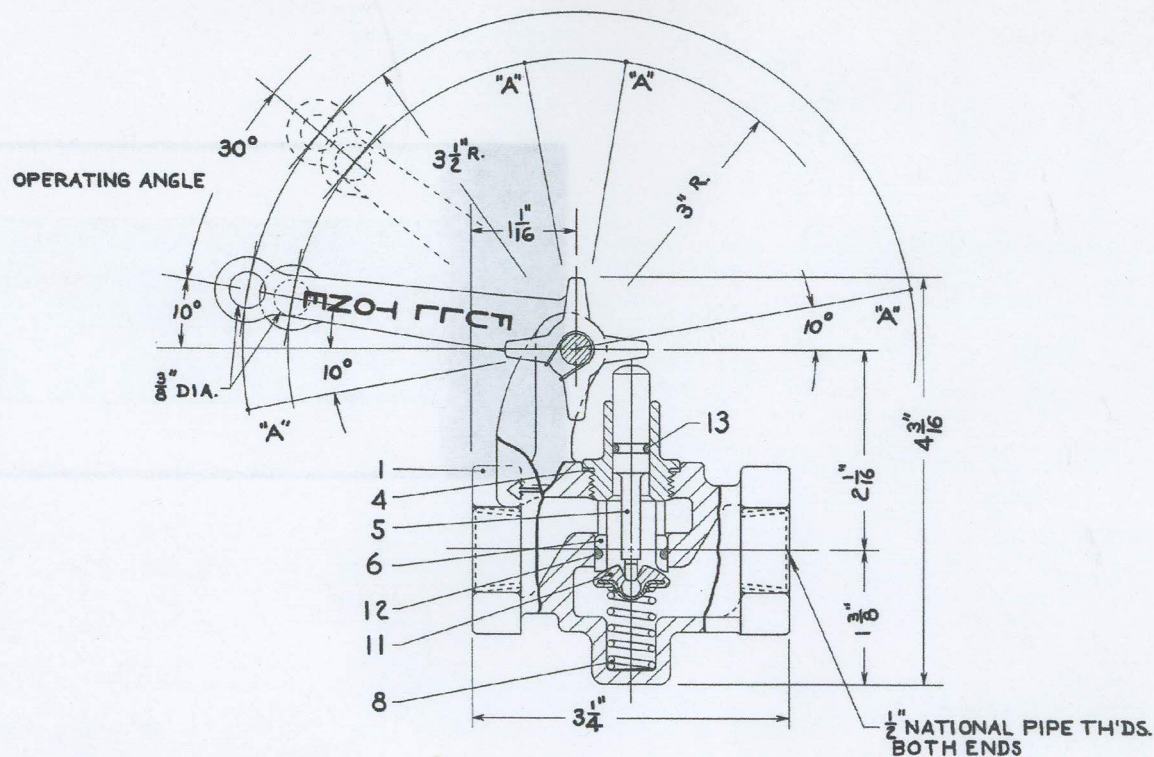


"FULL-TONE" VALVE SEAT"SOFT-TONE" VALVE SEAT

## LIST OF MATERIAL

PART NO.	SHOP NO.	DESCRIPTION	P.C.'S REQD.
1	D-25033	BODY	1
2	D-25034	LEVER (FULL)	1
3	D-25035	LEVER (SOFT)	1
4	D-25036	GASKET	2
5	D-25037	STEM	2
6	D-25038	VALVE SEAT (FULL)	1
7	D-25039	VALVE SEAT (SOFT)	1
8	D-25041	SPRING	2
9	D-25042	PIVOT PIN	1
10	D-25043	TORSION SPRING	2
11	GA-3A-25	DISC ASSEMBLY	2
12	E21084-11	O-RING PACKING	2
13	E21084-5	O-RING PACKING	2
14	42907	SNAP RING	2

NOTE:

OPERATING LEVERS MAY BE ASSEMBLED WITH ROPE LOOP IN POSITIONS "A" AS WELL AS SHOWN.

D-3349

JUNE 19, 1950

DIESEL Loco's CLASS DS-17

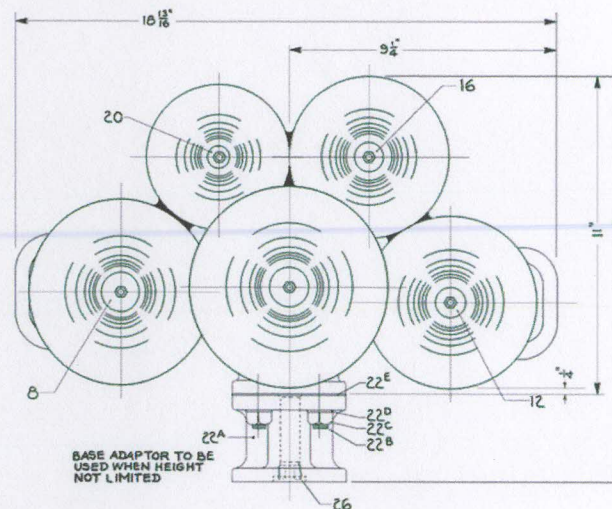
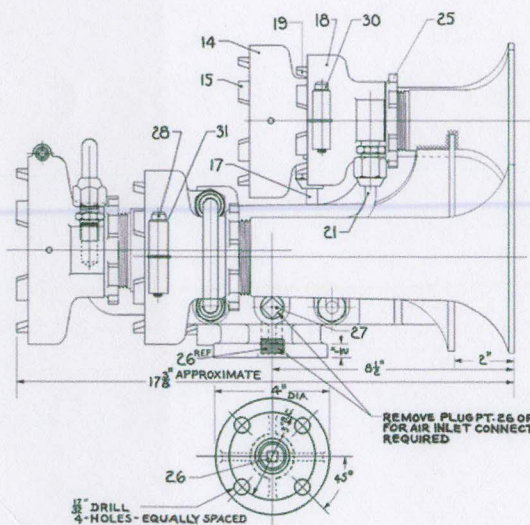
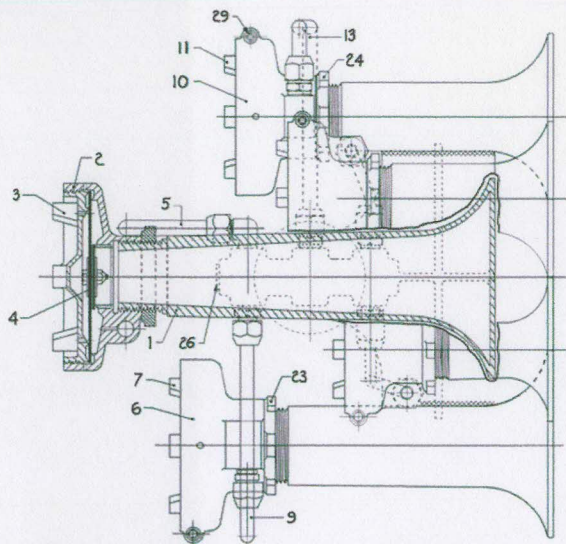
NATHAN M'FG. CO.  
NEW YORK, N. Y.DOUBLE STEM AIR VALVE  
FULL & SOFT TONE

REV.					
DRAWN BY	E.C.	SCALE			
CHECKED BY	4-25-50	DATE	4-27-50		

GA 5199



**NATHAN**



**LIST OF MATERIAL**

PART NO.	QTY	DESCRIPTION	QTY
1	1	WH-5A-15 BELL CLUSTER ASSY	1
2	1	WH-5A-4-1 DIAPHRAGM HEAD ASSY	1
3	1	C-20962-1 ADJUSTING CAP	1
4	1	WH-5A-7-1 DIAPHRAGM ASSY	1
5	1	WH-5A-16-1 TUBE ASSEMBLY	1
6	1	WH-5A-4-2 DIAPHRAGM HEAD ASSY	1
7	1	C-20962-2 ADJUSTING CAP	1
8	1	WH-5A-3-2 DIAPHRAGM ASSY	1
9	1	WH-5A-17-2 TUBE ASSEMBLY	1
10	1	WH-5A-4-3 DIAPHRAGM HEAD ASSY	1
11	1	C-20962-3 ADJUSTING CAP	1
12	1	WH-5A-8-3 DIAPHRAGM ASSY	1
13	1	WH-5A-18-3 TUBE ASSEMBLY	1
14	1	WH-5A-4-4 DIAPHRAGM HEAD ASSY	1
15	1	C-20962-4 ADJUSTING CAP	1
16	1	WH-5A-9-4 DIAPHRAGM ASSY	1
17	1	WH-5A-19-4 TUBE ASSEMBLY	1
18	1	WH-5A-4-5 DIAPHRAGM HEAD ASSY	1
19	1	C-20962-5 ADJUSTING CAP	1
20	1	WH-5A-10-5 DIAPHRAGM ASSY	1
21	1	WH-5A-20-5 TUBE ASSEMBLY	1
22 A	1	AC-20990 BASE ADAPTOR	1
22 B	4	N-22047 NUT	4
22 C	4	N-22044 LOCK WASHER	4
22 D	1	C-20991 GASKET	1
23	2	C-20973-1 1/2" LOCK RING	2
24	2	C-20973-2 3/4" LOCK RING	2
25	1	C-20973-3 5" LOCK RING	1
26	2	G-25215 PIPE PLUG (SUNK)	2
27	1	X-5345 PIPE PLUG (SO HEAD)	1
28	2	C-20974-3 1/2" CLAMPING SCREW	2
29	2	C-20974-2 3/4" CLAMPING SCREW	2
30	1	C-20974-1 5" CLAMPING SCREW	1
31	5	C-20975-1 LOCK WASHER	5

**C-1339**

JUNE 19, 1950

Diesel Loco's Class 3F-16, 3F-17, 3F-18

<b>NATHAN MFG. CO.</b>	
<b>NATHAN AIR CHIME WHISTLE</b>	
<b>(FIVE CHIME - TYPE H-5)</b>	
REV.	DATE
BY E.C.	DATE 3-7-50
WH-5180	