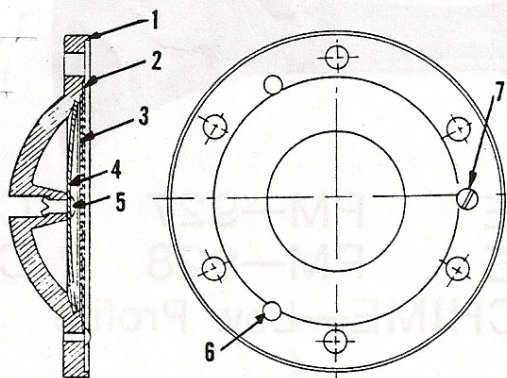


PARTS LIST

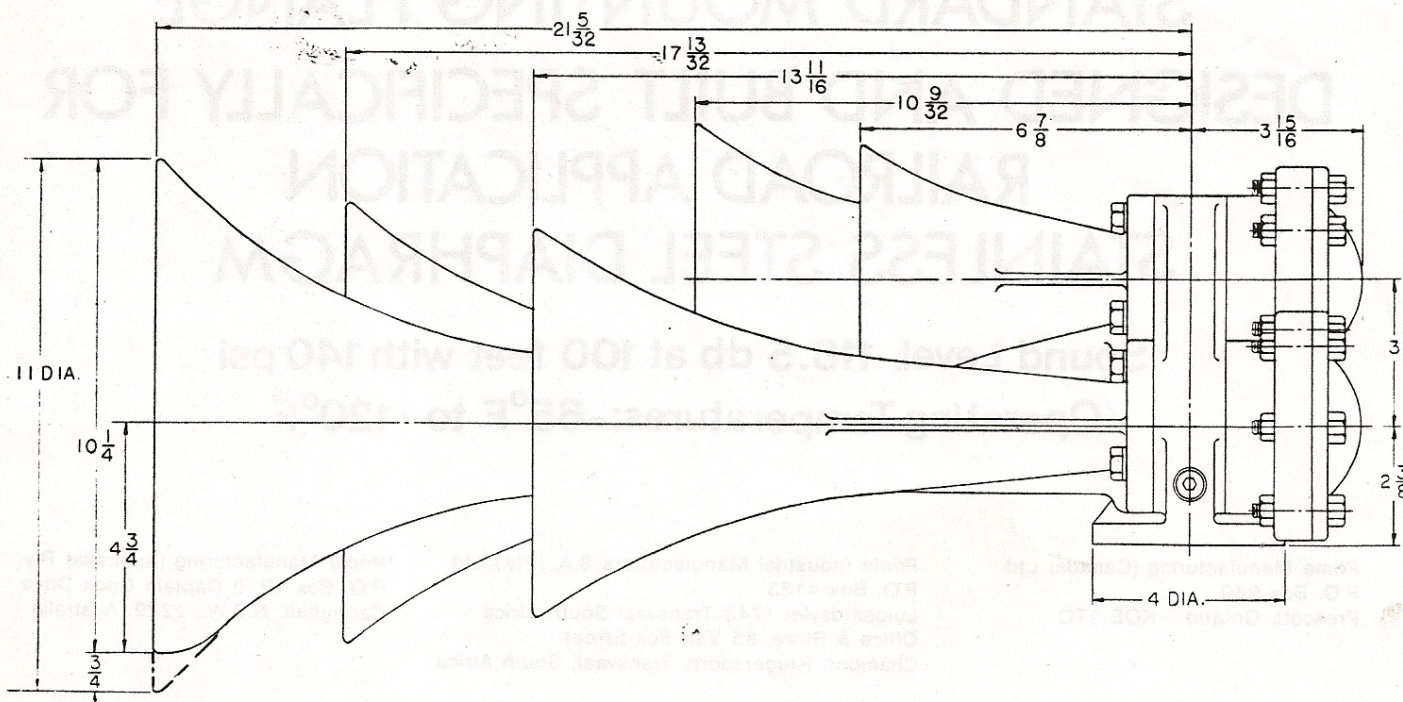
No. Required							No. Required								
No.	Part No.	920	927	928	929	990	Description	No.	Part No.	920	927	928	929	990	Description
1	P-50196	1					Manifold 3 Chimes	7	P-40255	3	1	2	5	3	Connecting brkt.
1	P40299		1				Manifold 1 Chime	8	P-40258	3	1	2	5	3	End cap assy.
1	P-50234			1			Manifold 2 Chimes	9	P-29814	3	1	2	5	3	Air inlet tube
1	P-60550				1		Manifold 5 Chimes	10	P-29764	6	2	4	10	6	Gasket
1	P-60893					1	Manifold 3 Chimes	11	CS-3385-Z	9	3	6	15	9	Capscrew
2	P-50195	1			1		11" Diam. Trumpet	12	CS-4088-Z	9	3	6	15	9	Lk. Washer
3	P-50194	1		1	1	1	9-1/4" Diam. Tmpt.	13	CS-3392-Z	18	6	12	30	18	Capscrew
4	P-60894				1	1	8" Diam. Trumpet	14	CS-1114-Z	18	6	12	30	18	Hex Nuts
5	P-40254	1	1	1	1		6-3/8" Diam. Tmpt.	15	CS-7038	2		2	2	2	Pipe plug
6	P-60895				1	1	5-7/16"Diam. Tmpt.								

† ITEM 9 NOT SHOWN



No.	Part No.	No. Req'd.*	Description
1	P-40256	1	Cover Plate
2	P-29763	1	Diaphragm
3	P-29762	1	Diaphragm
4	P-29761	1	Diaphragm
5	CS-6093	1	Rivet
6	CS-3387-Z	2	Drive Screw
7	CS-3122-N	1	Mach. Screw

*Per End Cap Assy.



NOTE: Smallest trumpet faces to the rear on Models PM-920 and PM-990

BULL. #420 9/81M