

# Parts List No. B2900 HORN MOUNTING AND PIPING - "A" UNIT PLATE B2900-1

Ref. No.	Part Number	No. Req.	Description
		X -	F2, F3 LOCOMOTIVES
		- X	F7, FP7 LOCOMOTIVES
1	8004191	2 -	HORN .. Air A-200 L.P. 8 inch - Replaced by 8146420 horn- See Parts List 2926
2	8146420	- 2	HORN .. Air A-200 L.P.Y.A. 8 inch - See Parts List 2926
3	8058356	- -	HORN .. E2 Pneumatic air - See Parts List 2926
NOTE: The pneumatic horn is applied to locomotives upon special request.			
3A	8158364	- -	HORN .. Air - Nathan M3 Cluster type - See Parts List 2926
3B	8155809	- -	HORN .. Air - Nathan M5 Cluster type - See Parts List 2926
4	8087413	2 -	VALVE .. Horn operating - Replaced by 8157491 valve - See Parts List 2929
5	8157491	- 2	VALVE .. Horn operating - See Parts List 2929
6	8024023	4 2	PAD .. Horn insulating - Rear
7	8024022	2 -	PAD .. Horn insulating - Front horn support
8	8024020	2 -	SUPPORT .. Front horn
9	8024021	2 -	SUPPORT .. Front horn - Applied to 8058356 horn only
10	8047160	1 1	COCK .. Cutout - 3/4 P.T.
11	8051954	1 -	COLLECTOR .. Dirt 3/4 P.T. - Includes drain cock
12	173844	8 -	BOLT .. Hexagon head - Front horn support to cab roof
13	100166	8 -	BOLT .. Hexagon head - Front horn support - 8058356 horn only
14	100161	- 8	SCREW .. Cap - Rear horn bracket to cab roof
15	112595	8 -	BOLT .. Hexagon head - Rear horn bracket to roof
16	8116432	16 -	SEAL .. Rubber
17	8129888	16 -	WASHER .. Cup
18	8058474	2 -	SPACER .. Horn mounting - 8058356 Horn only
19	8035134	16 -	NUT .. Self-locking
20	103323	8 16	WASHER .. Lock
21	8024024	2 -	WASHER .. Rear horn bracket - 8058356 Horn only
22	- - -	A.R. A.R.	GASKET .. Sponge rubber - Avail. 5 ft. - 8116908
23	8049866	4 2	ELBOW .. Pipe - 1/2 P.T.
24	8073299	4 4	NIPPLE .. Close 1/2 P.T. - Extra heavy brass
25	8090763	2 2	NIPPLE .. Pipe 1/2 x 4 inches long - Extra heavy brass
26	8115766	- 1	NIPPLE .. Pipe 3/4 x 8 inches long - Extra heavy brass
27	8095053	1 2	TEE .. Reducing pipe 1/2 x 1/2 x 3/4
28	8045904	1 1	UNION .. Solder - 3/4 Tube
29	144461	2 2	CONNECTOR .. Flared tube
30	8050665	A.R. A.R.	TUBING .. Copper - 3/4 Tube - 22 Feet required
31	116488	6 6	NUT .. Flared tube
32	8023253	A.R. A.R.	TUBING .. Copper - 5/8 Tube - 11 Feet required
33	8045930	1 1	ELBOW .. Solder union - 3/4 - 90°
34	8095065	- 1	COUPLING .. Solder - 3/4 Tube
35	8079783	A.R. A.R.	PIPE .. Brass - 3/4 Inch - 46 - 5/8 Inches required
36	8087376	1 1	NIPPLE .. Pipe - 3/4 x 3 Inches long - Extra heavy brass
37	8050474	- 1	ELBOW .. Union pipe - 3/4 P.T. Union x 3/4 solder

/ Replaces 8057831

8092861

8133604

JUNE, 1953

P. L. No. B2900

## HORN MOUNTING AND PIPING - "A" UNIT

Ref. No.	Part Number	No. Req.	Description
		X -	F2, F3 LOCOMOTIVES
		- X	F7, FP7 LOCOMOTIVES
38	8060472	- 1	TEE .. Union pipe - 3/4 Female solder union
39	8062488	- 1	UNION .. 3/4 Male solder
40	8064520	1 -	ELBOW .. Pipe - 3/4 - 90°
41	8091220	1 -	NIPPLE .. Pipe 3/4 P.T. x 5 inches long - Extra heavy brass
42	8092529	1 -	TEE .. Reducing pipe - 3/4 x 1/2 x 3/4
43	8092853	1 -	ELBOW .. Union pipe - 3/4 - 90°
44	8040335	1 -	ELBOW .. Flared tube - 1/4 Tube x 3/8 M.P.T.
45	8040313	1 -	CONNECTOR .. Flared tube - 3/8 M.P.T. x 3/8 Tube
46	8109836	1 -	NIPPLE .. Pipe 3/4 P.T. x 4 inches long - Extra heavy brass
47	8085633	1 -	ELBOW .. Union - 3/4 P.T. Union x 3/4 solder
48	8095031	1 -	ELBOW .. Solder - 3/4 Inch
49	8095227	- 1	TEE .. 3/4 Solder x 3/8 P.T. x 3/4 solder
50	8095071	- 1	TEE .. 3/4 Solder x 3/4 solder x 1/2 P.T.
51	8004644	4 4	CONNECTOR .. Pull cord
52	- - -	A.R. A.R.	CABLE .. Horn - 6 ft. req. - Avail. 100 ft. - 8116731
53	8052275	4 4	STOP .. Pull cord handle
54	8100291	2 2	HANDLE .. Pull cord
55	8060839	2 2	EYEBOLT .. Pull cord to controller - 1/4 Inch
56	174843	2 2	NUT .. Hexagon
57	8108126	2 2	CLAMP ASY. .. Angle - Pipe
58	8108125	2 2	CLAMP ASY. .. Angle - Pipe
59	8108116	4 6	CLAMP ASY. .. Backing plate and pipe
60	8108209	3 3	CLAMP ASY. .. Hanger and tube
61	8108114	1 1	CLAMP ASY. .. Backing plate and pipe
62	8108212	4 4	CLAMP ASY. .. Hanger and pipe
63	8108213	2 -	CLAMP ASY. .. Angle - Pipe
64	8108214	- 2	CLAMP ASY. .. Hanger and pipe
65	8159060	- 1	FITTING .. Choke union - 1/2 Inch union with 3/16 inch choke
66	144293	- 1	TEE .. Flared tube - 5/8 Tube x 5/8 tube x 1/2 M.P.T.
67	8040352	- 1	ELBOW .. Flared tube - 1/2 Tube x 1/2 F.P.T.
68	8040324	- 1	CONNECTOR .. Flared tube - 1/2 Tube x 1/2 F.P.T.
69	118541	- 2	NUT .. Flared tube
70	8023252	- A.R.	TUBING .. Copper - 1/2 Tube - 34 Inches required

/ Replaces 8004645

P. L. No. B2900

## HORN MOUNTING AND PIPING - "A" UNIT

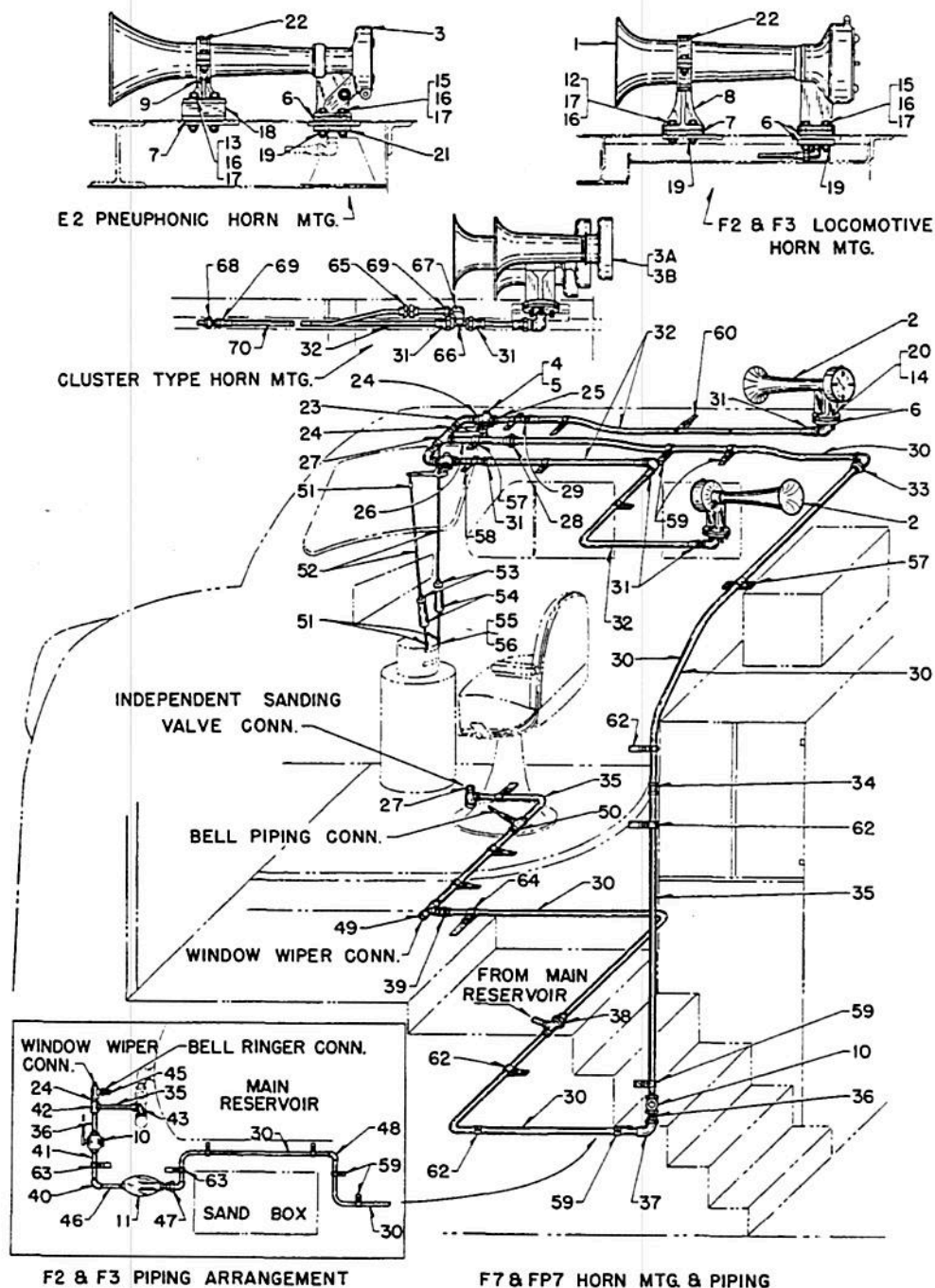
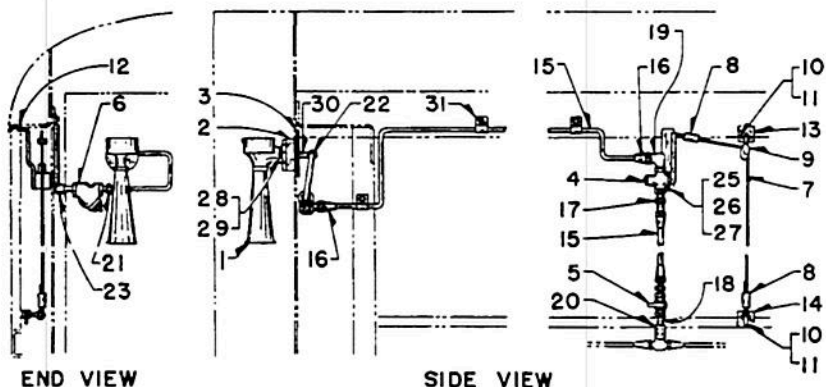


PLATE B2900-1

P. L. No. B2900

HORN MOUNTING AND PIPING - "B" UNIT  
PLATE B2900-2

Ref. No.	Part Number	No. Req.
-------------	----------------	-------------

Description

NOTE: A horn is only applied on freight "B" units equipped with a hostler's control. F2, F3, F7 Locomotives

1	8003721	1	HORN .. Air - A-75-HR - 3 Inch - See Parts List 2926
2	8031953	1	BLOCK .. Horn insulating
3	8094716	1	SUPPORT .. Horn mounting
4	8090906	1	VALVE .. Horn - 3/8 P.T.
5	8047162	1	COCK .. Cutout - 3/8 P.T.
6	8121659	1	STRAINER .. Self cleaning - 1/4 P.T.
7	8004645	A.R.	CORD .. Horn pull - 5 Feet required
8	8004644	2	CONNECTOR .. Horn pull cord
9	8024810	1	PULLEY .. 1 Inch
10	8021449	2	EYEBOLT .. Cable pulley
11	429607	4	NUT .. Hexagon
12	8094717	1	BRACKET .. Horn valve
13	8094718	1	PLATE .. Angle - Pulley mounting plate
14	8094719	1	SUPPORT .. Eyebolt
15	8023251	A.R.	TUBING .. Copper - 3/8 Tube - 16 Feet required
16	118539	6	NUT .. Flared tube
17	8040313	2	CONNECTOR .. Flared tube - 3/8 Tube x 3/8 M.P.T.
18	8061467	1	NIPPLE .. Short pipe - 3/8 P.T.
19	8039169	1	ELBOW .. Flared tube - 3/8 Tube x 3/8 M.P.T.
20	8049355	1	COUPLING .. Pipe - 3/8 P.T.
21	118750	1	CONNECTOR .. Flared tube - 3/8 Tube x 1/4 M.P.T.
22	118576	1	ELBOW .. Flared tube - 3/8 Tube x 1/4 F.P.T.
23	118755	1	ELBOW .. Flared tube - 3/8 Tube x 1/4 M.P.T.
*24	103878	1	PLUG .. Pipe - Strainer
25	106323	2	BOLT .. Hexagon head
26	103319	2	WASHER .. Lock
27	451395	2	NUT .. Hexagon
28	100150	2	BOLT .. Hexagon head
29	8031737	2	NUT .. Grip unit
30	8121776	1	NIPPLE .. Pipe - 1/4 P.T. x 3 Inches long
31	8108111	8	CLAMP .. Tube

8094111

# HORN MOUNTING AND PIPING - "A" UNIT E7 LOCOMOTIVE

Parts List No. C2901

PLATE C2901-1

Ref. No.	Part Number	No. Req.	Description
<b>HORN .. Air</b>			
1	8004191	1	HORN .. Air - A200 - LRR - 8 in. - Replaced by 8146420 - See P. L. 2926
2	8064076	1	HORN .. Air - A125 - LP - 5 in. - See P. L. 2926
3	8058356	-	HORN .. E2 pneuphonic air - See P. L. 2926

NOTE: The pneuphonic horn is applied to locomotive upon special request.

**HORN MOUNTING**

4	8024020	1	SUPPORT .. Horn
5	8024021	1	SUPPORT .. Horn
6	8024022	2	PAD .. Horn - Insulating - Front - One required per horn
7	8024024	2	WASHER ... Horn mounting rear
8	8035134	16	NUT .. Lock - 1/2-13 hex.
9	8058474	1	SPACER .. Fan mounting
10	8116432	16	SEAL .. Rubber
11	8168908	1	GASKET .. Inside horn sup ort - 5 ft. length - 15 in. required per horn - Replaces 8057831
12	8129888	16	WASHER .. Cup
13	8185843	4	PAD .. Horn - Insulating - Rear - One required per horn - Replaces 8024023
14	103374	4	PIN .. Cotter - 3/32 x 1
15	106263	3	WASHER .. Plain - 3/8
16	109886	4	NUT .. 3/8-16 hex.
17	179843	4	BOLT .. 3/8-16 x 1-1/2 hex. hd. - Replaces 100136
18	179892	8	BOLT .. 1/2-13 x 2-3/4 hex. hd. - Replaces 173844
19	179894	8	BOLT .. 1/2-13 x 3-1/4 hex. hd. - Replaces 112595
20	179896	4	BOLT .. 1/2-13 x 3-3/4 h x. hd. - Replaces 112611

**HORN PIPING AND FITTINGS**

21	8045904	1	UNION .. Solder - 3/4 P. T.
22	8045922	1	UNION .. Male and female - 3/4 P. T.
23	8045930	1	ELBOW .. Solder union - 3/4 - 90°
24	8047160	1	COCK .. Cutout - 3/4 P. T.
25	8049866	4	ELBOW .. Pipe - 1/2 - 90°
26	8050955	1	TEE .. Reducing pipe - 1/2 P. T. x 1/2 P. T. x 3/4 P. T.
27	8051954	1	COLLECTOR .. Dirt - 3/4 P. T.
28	8073299	4	NIPPLE .. Close pipe - 1/2 P. T.
29	8085633	1	ELBOW .. Union - 3/4 P. T. union x 3/4 solder
30	8087413	2	VALVE .. Horn operating - Replaced by 8157491 - See P. L. 2829
31	8095031	1	ELBOW .. Solder - 3/4 - 90° - Replaces 8031236 elbow
32	144277	1	ELBOW .. Flared tube - 5/8 tube
33	144461	2	CONNECTOR .. Flared tube - 5/8 tube x 1/2 internal N. P. T.
34	116487	2	CONNECTOR .. Flared tube - 5/8 tube x 1/2 F. P. T.
35	116488	6	NUT .. Flared tube - 5/8 tube
36	8116729	A. R.	TUBING .. Copper - 5/8 tube - 11 ft. req. - Avail. 50 ft. lg.
37	8133013	A. R.	TUBING .. Copper - 3/4 tube - 10 ft. req. - Avail. 20 ft. lg.

8085654

P. L. No. C2901

## HORN MOUNTING AND PIPING - "A" UNIT

Ref. No.	Part Number	No. Req.	Description
38	8116885	A. R.	PIPE .. Brass - 1/2 in. - 7 in. req. - Avail. 12 ft. lg. - Replaces 8079792
39	8116886	A. R.	PIPE .. Brass - 3/4 in. - 18 in. req. - Avail. 12 ft. lg. - Replaces 8079783

## HORN OPERATING PULL CABLE AND HANDLE

40	103337	4	WASHER .. Plain - Handle stop - Formerly 8052275
41	8100291	2	HANDLE .. Pull cable
42	8158242	4	CONNECTOR .. Cable - Formerly 8004644
43	8163778	3	CLAMP .. Cable
44	8116731	A. R.	CABLE .. 1/8 in. - Flexible - Avail. 100 ft. lg. - Replaces 8004645
45	8060839	2	EYE BOLT .. Pull cable to controller - 1/4 inch

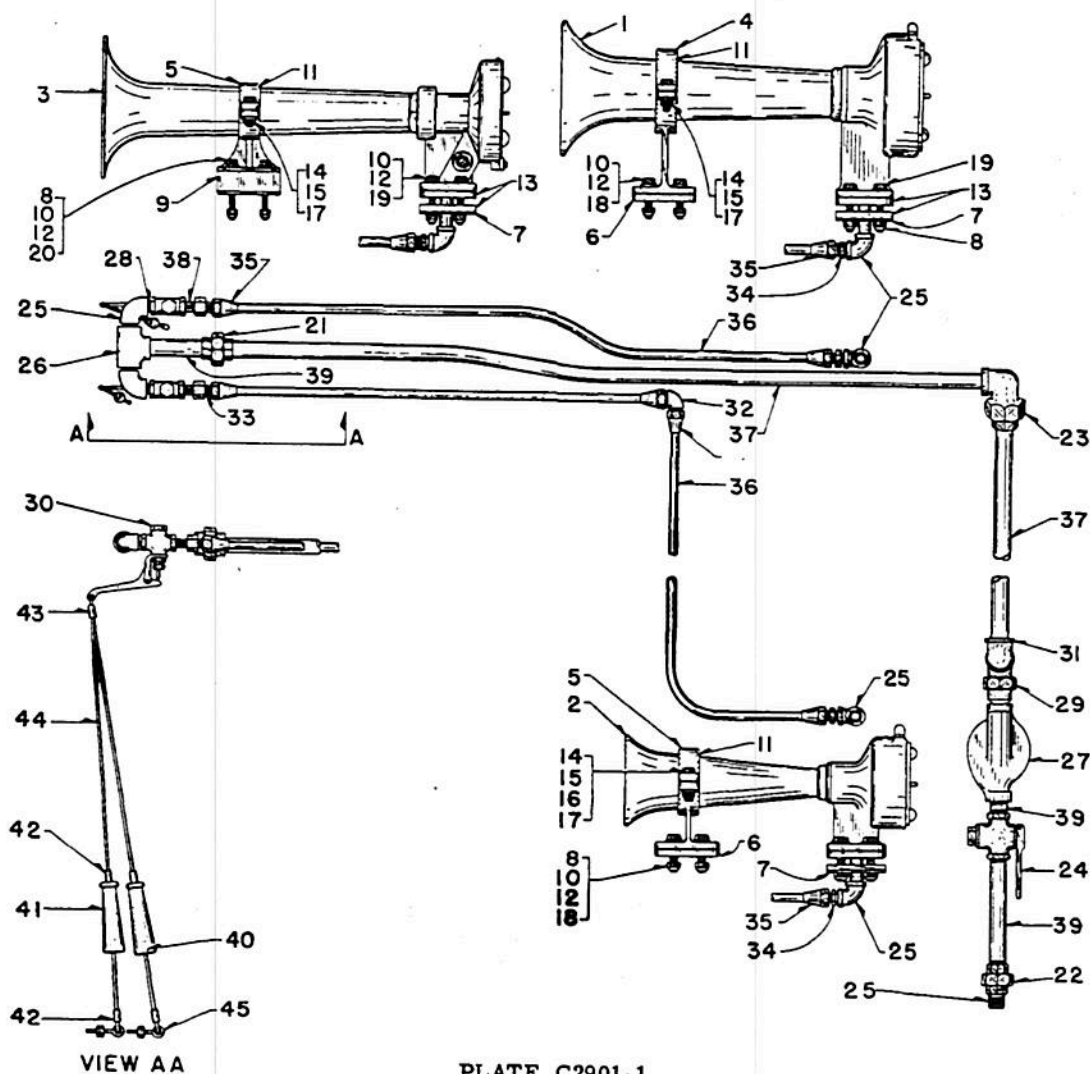


PLATE C2901-1

Parts List No. C2901

**HORN MOUNTING AND PIPING - "A" UNIT**  
**PLATE B2901-2**  
**E8 LOCOMOTIVE**

Ref. No.	Part Number	No. Req.	Description
<b>HORN .. Air</b>			
1	8146420	1	HORN .. Air - A200 LPYA - 8 inch - See P. L. 2926
2	8140796	1	HORN .. Air - A125 LPA - 5 inch - See P. L. 2926
3	8193426	-	HORN .. Air - S25 supertyfon - See P. L. 2926
4	8196313	-	HORN .. Air - S2M two bells forward - See P. L. 2926
5	8158364	-	HORN .. Air - Nathan M3 cluster type - See P. L. 2926
6	8155809	-	HORN .. Air - Nathan M3 cluster type - See P. L. 2926

**HORN MOUNTING**

7	8185843	2	INSULATOR
8	179887	10	BOLT
9	103323	10	WASHER

**HORN PIPING AND FITTINGS**

10	8157491	2	VALVE .. Horn operating
11	8047171	2	COCK .. Cutout - 1/2 P. T.
12	8049866	2	ELBOW .. Pipe - 1/2 P. T.
13	8061468	2	NIPPLE .. Short pipe - 1/2 P. T.
14	8087336	2	NIPPLE .. Pipe - 1/2 P. T. x 3 in. lg.
15	8123134	1	FITTING .. Flanged sweat - 3/4 in.
16	8095093	1	TEE .. Solder - 3/4 in.
17	8054221	1	TEE .. 3/4 solder x 1/2 P. T. x 1/2 P. T.
18	8090763	1	NIPPLE .. Pipe - 1/2 P. T.
19	8144608	1	NIPPLE .. Pipe - 1/2 P. T.
20	8119263	2	CLAMP ASSEMBLY .. Angle - Pipe
21	8108125	8	CLAMP ASSEMBLY .. Angle - Pipe
22	8108273	3	CLAMP ASSEMBLY .. Backing plate and tube
23	109429	4	ELBOW
24	116487	2	CONNECTOR
25	116488	14	NUT
26	119467	4	UNION
27	8116729	A. R.	TUBING .. Copper - 5/8 in. - 31 ft. req. - Avail. 50 ft. lg.
28	8133013	A. R.	TUBING .. Copper - 3/4 in. - 11 ft. req. - Avail. 20 ft. lg.
29	114461	2	CONNECTOR .. Flared tube - 5/8 tube x 1/2 N. P. T.

**HANDLE AND CABLE MOUNTING**

30	8100291	2	HANDLE
31	103337	4	WASHER .. Flat No. 10
32	8158242	4	CONNECTOR
33	8116731	A. R.	CABLE .. Approx. 42 in. req. - Avail. 100 ft. lg. - Replaces 8004645
34	8163788	3	CLAMP .. Cable

8144193 8145102



P. L. No. C2901

HORN MOUNTING AND PIPING - "A" UNIT

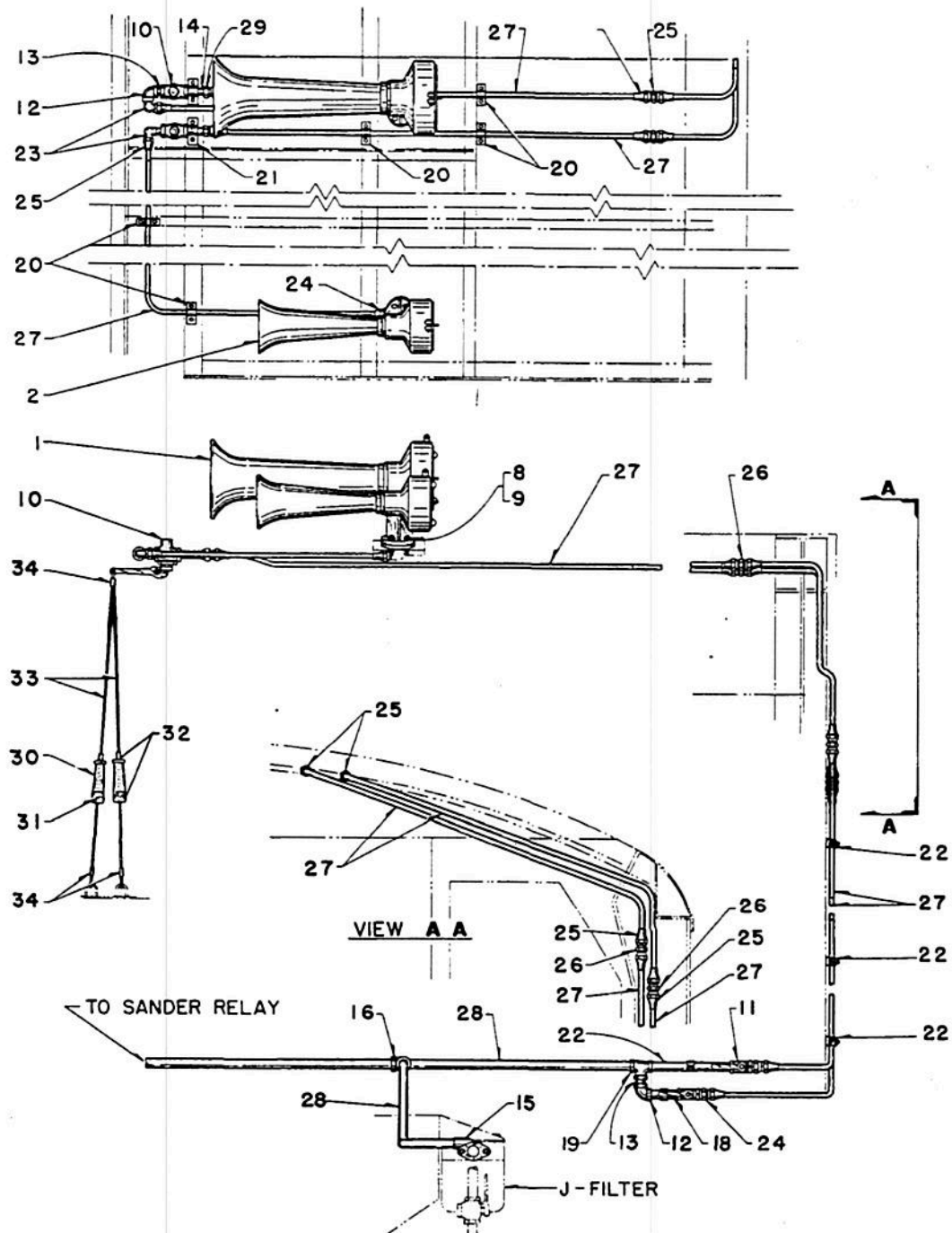


PLATE C2901-2



# HORN MOUNTING AND PIPING BL LOCOMOTIVE

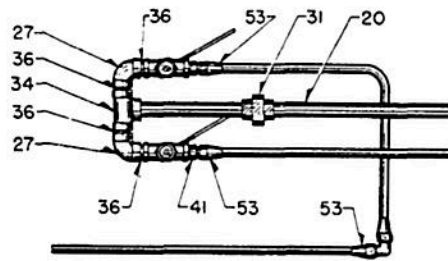
PLATE A2905-1

Ref. No.	Part Number	No. Req.	Description
1	8064076	1	HORN .. Air - A125 LP - See P. L. 2901
2	8146420	1	HORN .. Air - A200 LPYA - See P. L. 2901
3	8024021	1	SUPPORT .. Horn - Used with A125 LP horn
4	8024020	1	SUPPORT .. Horn - Used with A200 LPYA horn
5	8051954	1	COLLECTOR .. Dirt - 3/4
6	8088419	2	VALVE .. Operating - Air horn - See P. L. 2929
7	8024023	4	PAD .. Insulating - Horn
8	8024024	2	WASHER .. Horn mounting
9	8024022	4	PAD .. Insulating - Horn
10	8116432	8	SEAL .. Rubber
11	8129888	8	WASHER .. Cup
12	8135358	1	PAD .. Tapping
13	8135242	1	PAD .. Tapping
14	8100291	2	HANDLE .. Pull cord
15	8052275	4	STOP .. Handle
16	8004644	4	CONNECTOR .. Cord
17	8060839	2	EYE BOLT .. 1/4
18	8047160	1	COCK .. Cut-out - 3/4
19	- - - -	A.R.	TUBING .. Copper - 5/8 O.D. - Avail. 50 ft. lg. - 8116729
20	- - - -	A.R.	TUBING .. Copper - 3/4 I.P.S. - Avail. 20 ft. lg. - 8133013
21	- - - -	A.R.	CORD .. Pull - No. 8 braided - Avail. 25 ft. lg. - 8116819
22	- - - -	A.R.	GASKET .. Sponge rubber - Avail. 72 in. lg. - 8116908
23	- - - -	A.R.	PIPE .. Steel - 3/4 O.D. - Avail. 20 ft. lg. - 8116753
24	- - - -	A.R.	PIPE .. Brass - 1/2 O.D. - Avail. 12 ft. lg. - 8116885
25	8045936	1	ELBOW .. Union - 3/4 P.T. x 3/4 sol. - 90°
26	8045930	1	ELBOW .. Union - 3/4 sol. x 90°
27	8049866	2	ELBOW .. 1/2 - 90°
28	144283	2	ELBOW .. 5/8 tube x 1/2 female P.T.
29	8042817	1	ELBOW .. 3/4 - 45°
30	144277	4	ELBOW .. Tube - 5/8
31	8045904	1	UNION .. 3/4 sol.
32	8044161	2	UNION .. 3/4 - Male and female
33	119467	1	UNION .. Tube - 5/8
34	8095053	1	TEE .. Reducing - 1/2 P.T. x 1/2 P.T. x 3/4 P.T.
35	8060470	1	TEE .. 3/4 P.T. x 3/4 sol. x 3/4 sol.
36	8073299	4	NIPPLE .. Close - 1/2
37	8119871	1	NIPPLE .. 3/4
38	8115766	1	NIPPLE .. 3/4
39	8090978	1	NIPPLE .. 1/2
40	8060974	1	NIPPLE .. Short - 3/4
41	116487	2	CONNECTOR .. 5/8 tube x 1/2 M.P.T.
42	103881	1	PLUG .. Pipe - 3/4
43	174843	4	NUT .. Hex. - 1/4
44	100136	4	BOLT .. Hex. head - 3/8-16
45	106263	4	WASHER .. Plain - 3/8
46	174867	4	NUT .. Hex. - Slotted - 3/8-16
47	8032745	8	NUT .. Self-locking - 1/2-13
48	100164	8	BOLT .. Hex. head - 1/2-13
49	103323	8	WASHER .. Lock - 1/2
50	100163	12	BOLT .. Hex. head - 1/2-13
51	103374	4	PIN .. Cotter
52	8062410	1	COUPLING .. Pipe - 3/4 sol.
53	116488	13	NUT .. Tube

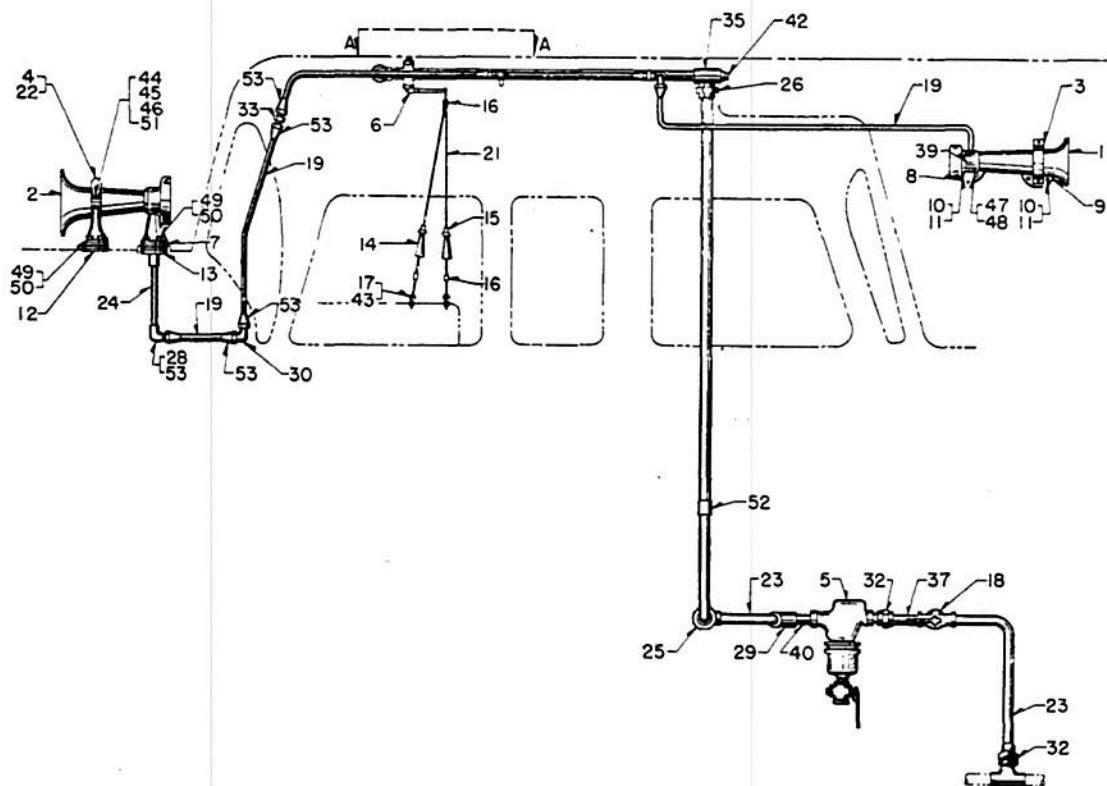
8135241

P. L. No. A2905

HORN MOUNTING AND PIPING



SEC. A-A



HORN MOUNTING AND PIPING  
BL LOCOMOTIVE  
PLATE A2905-1

# **HORN MOUNTING AND PIPING** SW1, NW2, SW7, SW8, SW9, TR LOCOMOTIVES

PLATE A2906-1

Ref. No.	Part Number	No. Required						Description
		X	-	-	-	-	-	SW1 loco. prior to E1185 - SW7 loco. prior to E6022 - NW2 loco.
		-	X	-	-	-	-	SW1 loco. after E1185 - SW7 loco. after E6022
		-	-	X	-	-	-	SW8, SW9 locomotive
		-	-	-	X	-	-	TR2, TR3 loco. and TR4 loco prior to E6146
		-	-	-	-	X	-	TR4 loco. after E6146
		-	-	-	-	-	X	TR5, TR6 locomotive
* 1	8064076	1	-	-	-	-	-	HORN .. Air - A-125 LP - 5 inch - See P. L. 2926
2	8140796	1	1	1	-	-	-	HORN .. Air - A-125 LPA - 5 inch - See P. L. 2926
* 3	8158364	-	1	1	1	1	1	HORN .. Air - Nathan - M3 cluster - Optional equipment - See P. L. 2926
* 4	8146420	-	1	1	-	-	-	HORN .. Air - A-200 LPYA - Optional equipment - See P. L. 2926
* 5	8155809	-	-	1	-	-	-	HORN .. Air - M5 cluster - Optional equipment - See P. L. 2926
* 6	8168823	-	-	-	-	1	-	HORN .. Air - Nathan M3R1 cluster - Optional equipment - See P. L. 2926
* 7	8134740	-	-	-	1	1	1	HORN .. Air - A200 HPA - See P. L. 2926
8	8047172	1	1	1	1	1	1	VALVE .. Horn operating
* 9	8172295	1	1	1	-	1	1	VALVE .. Horn operating - Two tone - 1/2 in. - Optional equipment - See P. L. 2929
10	8024648	1	1	1	1	1	1	BLOCK .. Horn insulating
11	173836	4	4	4	4	4	4	BOLT .. Hex. head - Horn mounting
*12	103323	4	-	-	4	-	-	WASHER .. Lock
*13	173685	4	-	-	4	-	-	NUT .. Hex. - Horn mounting bolt
14	8032745	-	4	4	-	4	4	NUT .. Lock - 1/2-13 - Horn mounting bolt
*15	8139796	4	-	-	4	4	-	CLAMP .. Cable - Horn operating
16	8163788	-	4	4	-	-	4	CLAMP .. Cable - Horn operating
17	- - - -	As Required						CABLE .. 1/8 O.D. - Tinned air craft - Avail. 100 ft. lg. - 8116731
18	8100291	1	1	1	1	1	1	HANDLE .. Pull cable - Horn operating
19	8024810	1	1	1	1	1	1	PULLEY .. 1 in. - Pull cable
20	8099685	1	1	1	1	1	1	EYE BOLT .. 1/4-20 - Pulley mounting
*21	174843	2	-	-	1	1	-	NUT .. Hex. - Eye bolt and cord end
*22	109084	-	1	1	-	-	1	NUT .. Hex. - Eye bolt
*23	103319	1	-	-	-	1	-	WASHER .. Lock - Eye bolt
*24	121743	2	-	-	2	2	-	NUT .. Hex. - Tube clamp
25	8108210	1	1	-	-	2	-	CLAMP .. Pipe - Includes hanger
26	8146149	-	1	2	-	-	-	CLAMP .. Pipe - Insulated
27	8136789	5	2	2	5	2	2	CLAMP .. Tube
28	114986	-	1	1	-	-	1	WASHER .. Plain - Handle to cord
*29	106261	-	1	-	-	-	1	WASHER .. Plain - Eye bolt
30	- - - -	As Required						PIPE .. Brass - 1/2 O.D. - Avail. 12 ft. lg. - 8116885
31	8138239	1	1	1	-	1	1	TUBE .. Air supply line to horn operating valve - Can be made from 8116729 - 5/8 tubing
*32	8137166	-	-	-	1	-	-	TUBE .. Air supply line to horn operating valve - Can be made from 8116729 - 5/8 tubing
33	8045937	1	1	1	1	-	1	ELBOW .. Union - 1/2 - 90°
*34	8087527	1	1	1	1	1	1	NIPPLE .. 1/2 P.T. x 2
35	8049866	1	2	2	1	1	1	ELBOW .. 1/2 P.T. x 90°
*36	8149087	1	-	-	-	-	-	NIPPLE .. 1/2 P.T. x 6-1/2
37	8115765	1	1	1	1	1	1	NIPPLE .. 1/2 P.T. x 2-1/2
38	8149101	-	1	1	-	1	1	NIPPLE .. 1/2 P.T. x 10-1/2
39	- - - -	As Required						TUBING .. Copper - 5/8 O.D. - Avail. 50 ft. lg. - 8116729

8130223 8151374 8161688 8151337

DECEMBER, 1952

P. L. No. A2906

## HORN MOUNTING AND PIPING

Ref. No.	Part Number	No. Required						Description
		X	-	-	-	-	-	SW1 loco. prior to E1185 - SW7 loco. prior to E6022 - NW2 loco. (cont'd.)
		-	X	-	-	-	-	SW1 loco. after E1185 - SW7 loco. after E6022 (cont'd.)
		-	-	X	-	-	-	SW8, SW9 locomotive (cont'd.)
		-	-	-	X	-	-	TR2, TR3 loco. and TR 4 loco prior to E6146 (cont'd.)
		-	-	-	-	X	-	TR4 loco. after E6146 (cont'd.)
		-	-	-	-	-	X	TR5, TR6 locomotive (cont'd.)
40	116488	4	4	4	4	4	4	NUT .. Flared tube
41	116487	2	2	2	2	2	2	CONNECTOR .. Tube
42	8060973	2	2	2	2	2	2	NIPPLE .. Short
43	8070161	1	1	1	1	1	1	STRAINER .. Air - 1/2
44	103879	1	1	1	1	1	1	PLUG .. Pipe - 3/8
45	8047171	1	1	1	1	1	1	COCK .. Cut-out
46	119467	1	1	1	1	1	1	UNION .. Tube
47	101985	2	2	2	2	2	2	SCREW .. Slotted head - Wood
48	176535	3	2	2	3	2	-	SCREW .. Round head - Self-tapping
*49	8042825	1	-	-	-	-	-	ELBOW .. 1/2-90°
*50	8061468	-	-	-	1	-	-	NIPPLE .. Short - 1/2 P.T.
*51	109429	-	-	-	1	-	-	ELBOW .. 5/8 tube x 1/2 M.P.T.
*52	8095162	-	-	-	-	1	-	CLAMP .. Cable

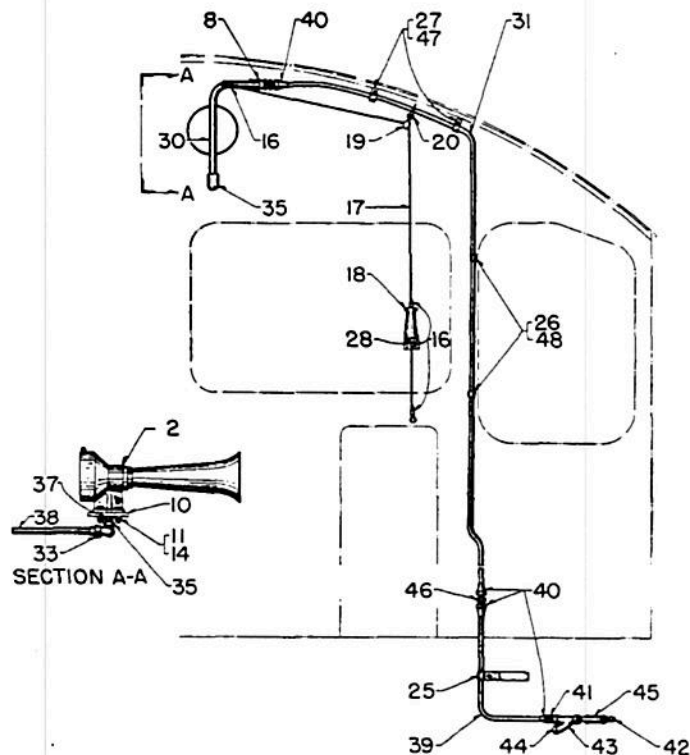


PLATE A2906-1

# **HORN** GP7 LOCOMOTIVE

Parts List No. A2907

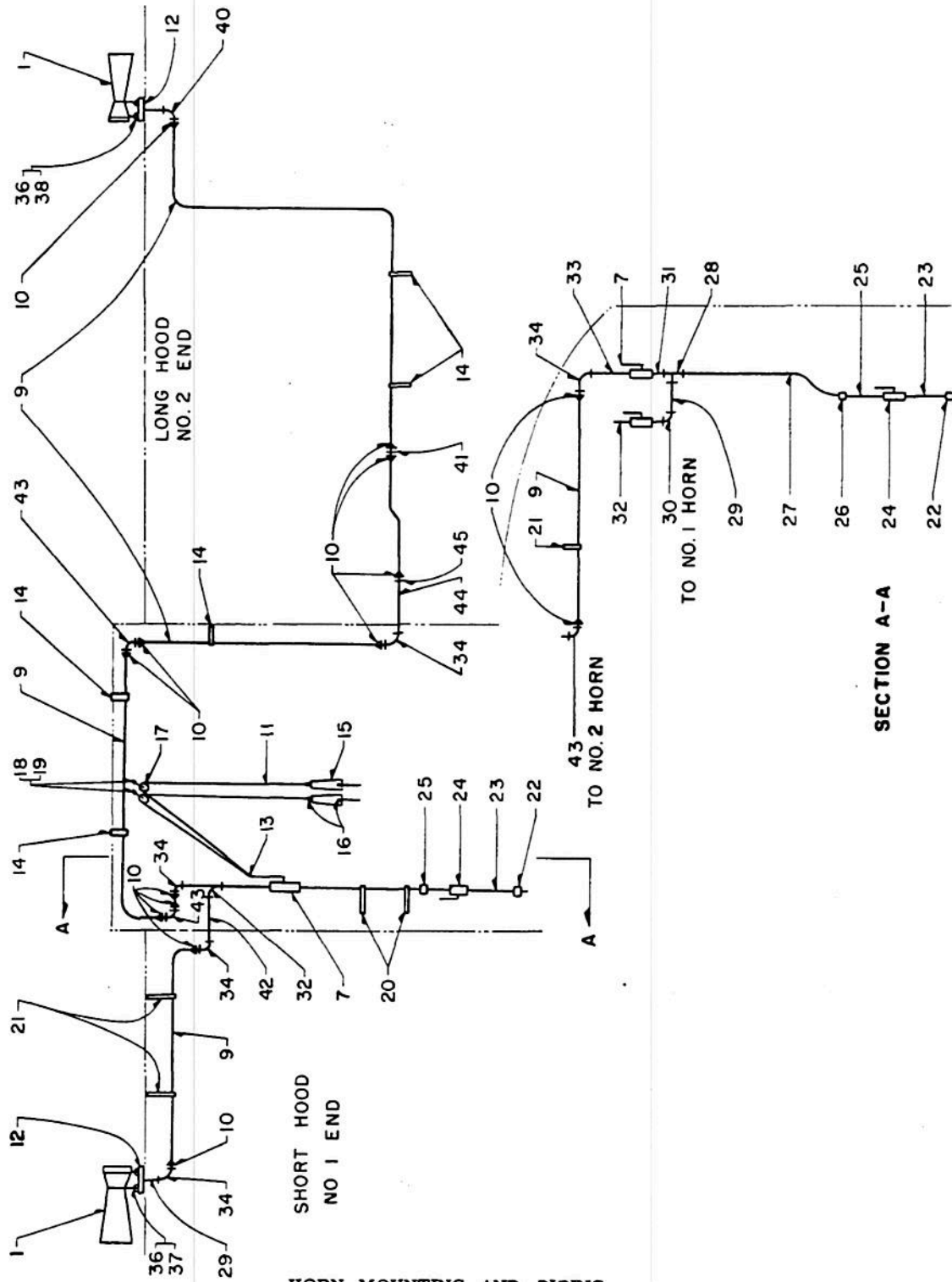
## **HORN MOUNTING AND PIPING** PLATE A2907-1

Ref. No.	Part Number	No. Req.	Description
1	8146420	2	HORN .. Air - A200 LPYA - 8 inch - See Parts List 2926
* 2	8058356	-	HORN .. Air - E2 pneuphonic - See Parts List 2926
* 3	8158364	-	HORN .. Air - Nathan M3 cluster type - See Parts List 2926
* 4	8155809	-	HORN .. Air - Nathan M5 cluster type - See Parts List 2926
* 5	8155810	-	HORN .. Air - Nathan - See Parts List 2926
* 6	8175399	-	HORN .. Air - Nathan cluster type - Same as 8155809 except two bells in reverse position - See Parts List 2926
7	8157491	2	VALVE .. Horn operating - See Parts List 2929
* 8	8172295	-	VALVE .. Horn operating - Two-tone modulating - Optional equipment - See P. L. 2929
9	- - - -	A.R.	TUBING .. Copper - 5/8 O.D. - Avail. 50 ft. lg. - 8116729
10	116488	2	NUT .. Flared tube
11	- - - -	A.R.	CORD .. Pull - No. 8 braided - Horn valve operating - Available 25 ft. lg. - 8116819
12	8185843	2	PAD .. Horn mounting
13	8004644	2	CONNECTOR .. Cord
14	8108114	9	CLAMP ASY. .. Pipe
15	8100291	2	HANDLE .. Pull cord - Valve operating
16	8052275	4	STOP .. Handle
17	8024810	2	PULLEY .. 1 in. - Pull cable
18	8158821	2	BOLT .. Eye - 10-24
19	120361	2	NUT .. Eye bolt - 10-24 hex.
20	8108196	2	CLAMP ASY. .. Pipe
21	8108209	3	CLAMP ASY. .. Tube
22	8044155	1	UNION .. Female - 3/4
23	8136460	1	NIPPLE .. 3/4 P.T. x 5-1/2
24	8047160	1	COCK .. Cut-out - 3/4
25	8060974	1	NIPPLE .. Short - 3/4
26	8050094	1	COUPLING .. Reducing - 3/4 x 1/2 P.T.
27	- - - -	A.R.	PIPE .. Steel - 1/2 O.D. - Avail. 20 ft. lg. - 8116834
28	8044176	1	TEE .. Union - 1/2 P.T.
29	8060973	3	NIPPLE .. Short - 1/2 P.T.
30	8042825	1	ELBOW .. 1/2 P.T. x 90°
31	8080073	2	NIPPLE .. 1/2 P.T. x 2-1/2
32	8044168	1	ELBOW .. Union - 1/2 x 90° female
33	8089226	1	NIPPLE .. 1/2 P.T. x 4-1/2
34	144283	4	ELBOW .. 5/8 tube x 1/2 F.P.T.
*35	8091518	1	GROMMET .. Tube
36	103323	8	WASHER .. Lock
37	173829	4	BOLT .. Hex. hd. - No. 1 end horn mounting
38	179887	4	BOLT .. Hex. hd. - No. 2 end horn mounting
*39	429608	4	NUT .. Hex.
40	109429	1	ELBOW .. 5/8 tube x 1/2 P.T.
41	119467	1	CONNECTOR .. 5/8 tube
42	8095871	1	NIPPLE .. 1/2 x 6 in.
43	144277	2	ELBOW .. Tube - 5/8
44	8115765	1	NIPPLE .. Brass - 1/2 x 2-1/2
45	144461	1	CONNECTOR .. 5/8 tube x 1/2 F.P.T.

8159202 8159206 8158968

P. L. No. A2907

## HORN



HORN MOUNTING AND PIPING  
 PLATE A2907-1

A2907

DECEMBER, 1952

Parts List No. D2926

# **HORN** **SINGLE BELL HORNS**

PLATE D2926-1

Ref. No.	Part Number	Number Required										Description
1	8003721	X	-	-	-	-	-	-	-	-	-	HORN .. Air - A75HR - 3 inch - F2B, F3B, F7B, E7B, E8B, FT
2	8064076	-	X	-	-	-	-	-	-	-	-	HORN .. Air - A125LP - 5 inch - SW1, NW2, SW7, BL, E7, NW5, TR2, FT - Replaces 8003719
3	8140796	-	-	X	-	-	-	-	-	-	-	HORN .. Air - A125LPA - 5 inch - E8, GP7, SW1, SW7, SW8, SW9, F7B
4	8004191	-	-	-	X	-	-	-	-	-	-	HORN .. Air - A200LP - 8 inch - FT - Replaces 8146420
5	8146420	-	-	-	-	X	-	-	-	-	-	HORN .. Air - A200LPYA - 8 inch - E8, F7, FP7, GP7, SD7, BL, SW1, SW7, SW8, SW9
6	8134173	-	-	-	-	-	X	-	-	-	-	HORN .. Air - A200HP - 8 inch - F3
7	8134740	-	-	-	-	-	-	X	-	-	-	HORN .. Air - A200HPA - 8 inch - TR2, TR3, TR4, TR5, TR6
8	8058356	-	-	-	-	-	-	-	X	-	-	HORN .. Air - E2 pneumatic - E7, E8, GP7, F2, F3, F7
9	8155810	-	-	-	-	-	-	-	-	X	-	HORN .. Air - MS1 - E8, GP7, F7, FP7, SW8
10	8193426	-	-	-	-	-	-	-	-	-	X	HORN .. Air - S25 supertyfon - GP7, SD7, F7, E8
11	8197542	-	-	-	-	-	-	-	-	-	X	HORN .. Air - S31 supertyfon - SW1, SW8, SW9
12	8133023	1	-	-	-	-	-	-	-	-	-	DIAPHRAGM .. Bronze - Set of three - 3 inch 8043303 .. Bronze - One only - 3 inch
NOTE: Plastic diaphragms are not available for 3 inch horn.												
13	8104781	-	1	1	-	-	-	-	-	-	-	DIAPHRAGM .. Plastic - One req. per horn - 5 inch 8133022 .. Bronze - Set of three - 5 inch 8073477 .. Bronze - One only - 5 inch
14	8098436	-	-	-	1	1	1	1	-	-	-	DIAPHRAGM .. Plastic - One req. per horn - 8 inch 8133021 .. Bronze - Set of three - 8 inch 8043402 .. Bronze - One only - 8 inch
15	8068126	-	-	-	-	-	-	-	1	-	-	DIAPHRAGM ASY. .. Horn - 6-1/2 inch
16	8166943	-	-	-	-	-	-	-	-	1	-	DIAPHRAGM ASY. .. Horn - 6 inch
17	8198938	-	-	-	-	-	-	-	-	1	1	DIAPHRAGM
18	8061032	1	-	-	-	-	-	-	-	-	-	COVER .. Back
19	8061030	-	1	-	-	-	-	-	-	-	-	COVER .. Back
20	8166976	-	-	1	-	-	-	-	-	-	-	COVER .. Back
21	8061031	-	-	-	1	-	1	-	-	-	-	COVER .. Back
22	8167005	-	-	-	-	1	-	1	-	-	-	COVER .. Back
23	8123801	-	-	-	-	-	-	-	1	-	-	COVER .. Back - Includes breather felt, rivets and cover
24	8166937	-	-	-	-	-	-	-	-	1	-	COVER .. Back
25	8211998	-	-	-	-	-	-	-	-	-	1	COVER .. Back
26	8061033	-	1	1	1	1	1	1	-	-	-	BOLT ASY. .. Lock
27	103456	-	1	1	1	1	1	1	-	-	-	WASHER .. Lock - 7/16
28	123834	-	1	1	1	1	1	1	-	-	-	NUT .. 3/8-16 hex. slotted
29	121222	-	1	1	1	1	1	1	-	-	-	PIN .. Cotter - 3/32 x 3/4 in. lg.
30	180078	-	-	-	-	-	-	-	-	-	6	BOLT .. Back cover - 5/16-18 x 7/8 hex. hd.



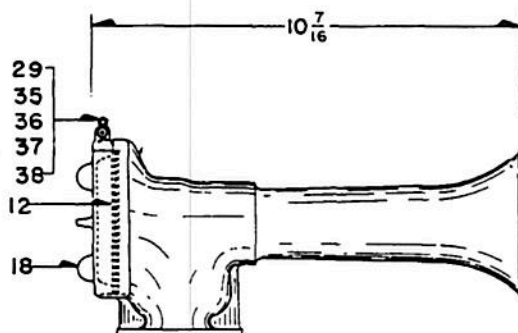
P. L. No. D2926

## HORN

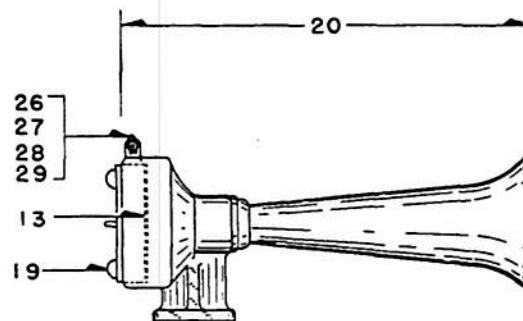
Ref. No.	Part Number	Number Required										Description
	8003721	X	-	-	-	-	-	-	-	-	-	HORN .. Air - A75HR - 3 inch - F2B, F3B, F7B, E7B, E8B, FT (continued)
	8064076	-	X	-	-	-	-	-	-	-	-	HORN .. Air - A125LP - 5 inch - SW1, NW2, SW7, BL, E7, NW5, TR2, FT - Replaces 8003719 (continued)
	8140796	-	-	X	-	-	-	-	-	-	-	HORN .. Air - A125LPA - 5 inch - E8, GP7, SW1, SW7, SW8, SW9, F7B (continued)
	8004191	-	-	-	X	-	-	-	-	-	-	HORN .. Air - A200LP - 8 inch - FT - Replaces 8146420 (continued)
	8146420	-	-	-	-	X	-	-	-	-	-	HORN .. Air - A200LPYA - 8 inch - E8, F7, FP7, GP7, SD7, BL, SW1, SW7, SW8, SW9 (continued)
	8134173	-	-	-	-	-	X	-	-	-	-	HORN .. Air - A200HP - 8 inch - F3 (continued)
	8134740	-	-	-	-	-	-	X	-	-	-	HORN .. Air - A200HPA - 8 inch - TR2, TR3, TR4, TR5, TR6 (continued)
	8058356	-	-	-	-	-	-	-	X	-	-	HORN .. Air - E2 pneuphonic - E7, E8, GP7, F2, F3, F7
	8155810	-	-	-	-	-	-	-	-	X	-	HORN .. Air - MS1 - E8, GP7, F7, FP7, SW8 (continued)
	8193426	-	-	-	-	-	-	-	-	-	X	HORN .. Air - S25 supertyfon - GP7, SD7, F7, E8
	8197542	-	-	-	-	-	-	-	-	-	X	HORN .. Air - S31 supertyfon - SW1, SW8, SW9 (continued)
31	120214	-	-	-	-	-	-	-	-	6	6	WASHER .. Lock - 5/16
32	8123800	-	-	-	-	-	-	-	1	-	-	CLAMP .. Cover
33	8172981	-	-	-	-	-	-	-	-	1	-	SCREW .. Cover clamping
34	120214	-	-	-	-	-	-	-	-	1	-	WASHER .. Lock - 5/16
35	8167158	1	-	-	-	-	-	-	-	-	-	BOLT ASY. .. Lock
36	8167157	1	-	-	-	-	-	-	-	-	-	WASHER .. Lock
37	8167159	1	-	-	-	-	-	-	-	-	-	NUT
38	107761	1	-	-	-	-	-	-	-	-	-	PIN .. Cotter - 1/16 x 5/8 in. lg.
39	8166955	-	-	-	-	-	-	-	-	1	-	SEAT .. Diffuser
40	8166960	-	-	-	-	-	-	-	-	2	-	GASKET .. Horn base to bell and diaphragm head
41	8166967	-	-	-	-	-	-	-	-	1	-	"O" RING .. Seat to diaphragm head
42	143994	-	-	-	-	-	-	-	-	2	-	PLUG .. Pipe - Horn base inlet ports - 1/2 slotted headless
* 43	422213	-	-	-	-	-	-	-	-	3	3	SCREW .. Diaphragm ring
* 44	8211999	-	-	-	-	-	-	-	-	2	2	GASKET
* 45	179850	-	-	-	-	-	-	-	-	3	3	BOLT .. 3/8-16 x 2-3/4 hex. hd.
* 46	103456	-	-	-	-	-	-	-	-	3	3	WASHER .. Lock - 7/16
47	8166954	-	-	-	-	-	-	-	-	1	-	DIFFUSER .. Horn diaphragm

P. L. No. D2926

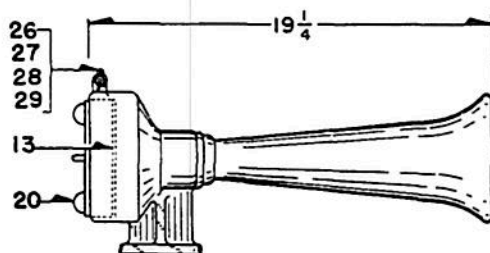
HORN



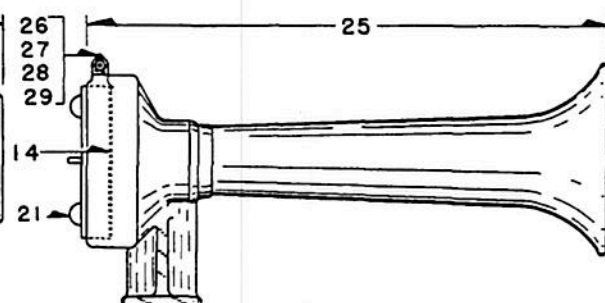
REF. NO. 1



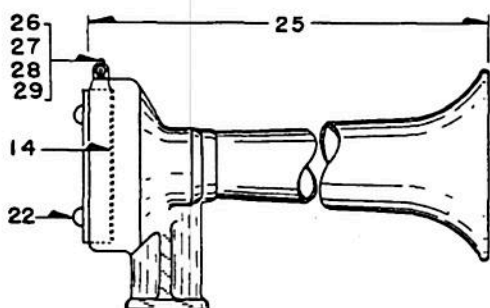
REF. NO. 2



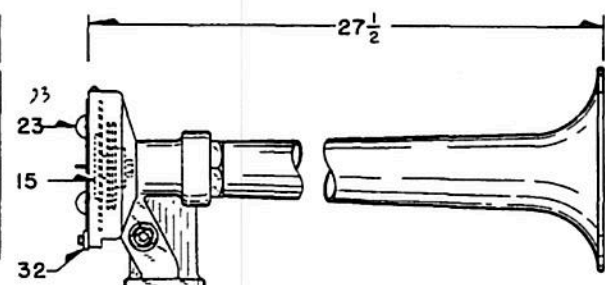
REF. NO. 3



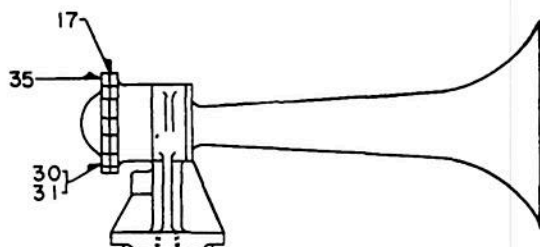
REF. NO. 4



REF. NO. 5



REF. NO. 8



REF. NO'S. 10 & 11  
SINGLE BELL HORNS  
PLATE D2926-1

P. L. No. D2926

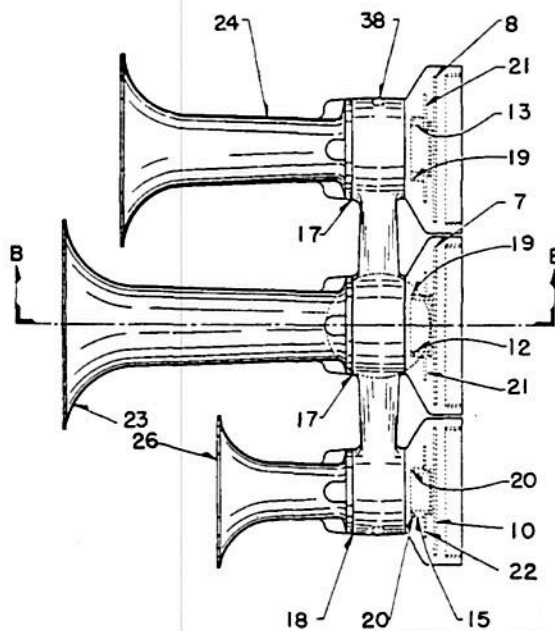
HORN  
CLUSTER TYPE HORN (NATHAN)

PLATE D2926-2

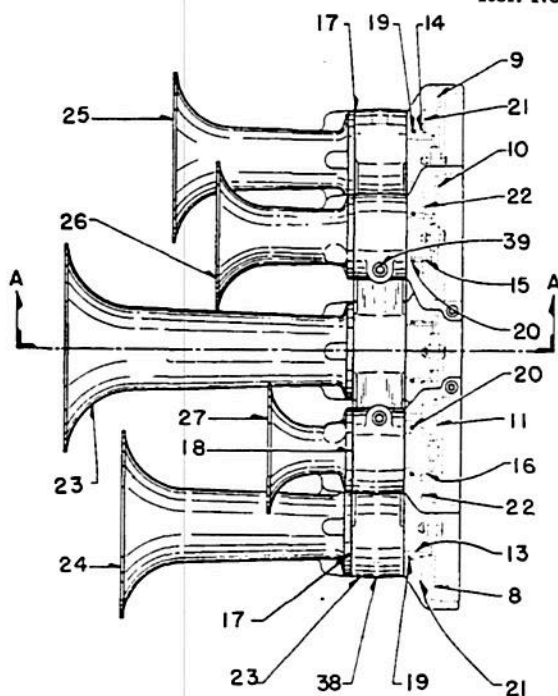
Ref. No.	Part Number	No. Req.	Description
1	8158364	X -	HORN .. Air - M3 - 3 bells forward - F7, FP7, GP7, E8, SW1, SW7, SW8, SW9, TR2, TR3, TR4, TR5, TR6
* 2	8168823	X -	HORN .. Air - M3R1 - 2 bells forward, 1 bell reverse - TR, GP7, SD7, GP9
* 3	8199266	X -	HORN .. Air - M3RT1 - 2 bells forward, 1 bell reverse - Tilted 10° - SW1, SW8, SW9
4	8155809	- X	HORN .. Air - M5 - 5 bells forward - F7, FP7, GP7, E8, SW8, SW9, SD7
* 5	8175399	- X	HORN .. Air - M5R24 - 3 bells forward, 2 bells reverse - F7, FP7, GP7, SD7, SW9
* 6	8205420	- X	HORN .. Air - M5R23 - 2 top and 1 center bell forward, 2 bells reverse - GP7, E8
7	8166943	1 1	DIAPHRAGM ASY. .. No. 1 bell
8	8166942	1 1	DIAPHRAGM ASY. .. No. 2 bell
9	8166944	- 1	DIAPHRAGM ASY. .. No. 3 bell
10	8166945	1 1	DIAPHRAGM ASY. .. No. 4 bell
11	8166946	- 1	DIAPHRAGM ASY. .. No. 5 bell
12	8166955	1 1	SEAT .. No. 1 bell
13	8166956	1 1	SEAT .. No. 2 bell
14	8166957	- 1	SEAT .. No. 3 bell
15	8166958	1 1	SEAT .. No. 4 bell
16	8166959	- 1	SEAT .. No. 5 bell
17	8166960	4 6	GASKET .. Bell mounting - Replaces 8166961 and 8166962 - 2-1/8 I.D. x 3-3/4 O.D. x .050 thick
18	8166963	2 4	GASKET .. Bell mounting - Replaces 8166964 - 1-11/16 I.D. x 3-1/8 O.D.
19	8166967	2 3	GASKET .. "O" Ring - 2-1/8 I.D. x 2-3/8 O.D.
20	8166966	1 2	GASKET .. "O" Ring - 1-5/8 I.D. x 1-7/8 O.D.
21	8166954	2 3	DIFFUSER .. Large
22	8166953	1 2	DIFFUSER .. Small
23	8166948	1 1	BELL .. No. 1 - Not used on 8199266 or 8205420 horn
24	8166949	1 1	BELL .. No. 2 - Not used on 8199266 or 8205420 horn
25	8166950	- 1	BELL .. No. 3 - Not used on 8205420 horn
26	8166951	1 1	BELL .. No. 4 - Not used on 8199266 or 8205420 horn
27	8166952	- 1	BELL .. No. 5 - Not used on 8205420 horn
28	8166937	1 1	COVER .. Back adjusting - No. 1 bell
29	8166938	1 1	COVER .. Back adjusting - No. 2 bell
30	8166939	- 1	COVER .. Back adjusting - No. 3 bell
31	8166940	1 1	COVER .. Back adjusting - No. 4 bell
32	8166941	- 1	COVER .. Back adjusting - No. 5 bell
33	180735	9 15	BOLT .. Bell to horn base - 5/16-18 x 3-1/4 hex. hd. - Replaces 8172979, 126078
34	8172981	3 5	BOLT .. Socket head - 3/8-18 x 2-1/2 drilled hex. hd.
35	120214	12 20	WASHER .. Lock - 5/16 - Replaces 8172980, 8172982, 8161072
36	8166965	- 1	RESTRICTOR .. Horn base
37	143994	2 2	PLUG .. Pipe - 1/2-14 countersunk
38	143993	2 2	PLUG .. Pipe - 3/8-18 slotted headless - Except 8205420 horn
39	143981	- 2	PLUG .. Pipe - 1/2-13 sq. hd. - Four req. for 8205420 horn - Replaces 8172978

P. L. No. D2926

HORN



THREE BELL HORN  
Ref. No. 1



FIVE BELL HORN  
Ref. No. 4

CLUSTER TYPE HORN (NATHAN)  
PLATE D2926-2

SECTION B-B

SECTION A-A

P. L. No. D2926

# HORN CLUSTER TYPE (LESLIE)

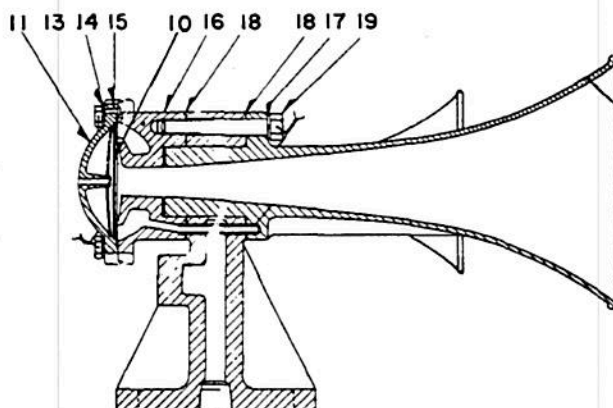


PLATE A2926-3

Ref. No.	Part Number	Number Required										Description
1	8196313	X	-	-	-	-	-	-	-	-	-	HORN .. Air - S2M - Two bells forward
2	8207280	-	X	-	-	-	-	-	-	-	-	HORN .. Air - S2A - Two bells forward
3	8219708	-	-	X	-	-	-	-	-	-	-	HORN .. Air - S2MR - One bell forward - One bell reverse
4	8210330	-	-	-	X	-	-	-	-	-	-	HORN .. Air - S3KR - Two bell forward - One bell reverse
5	8197969	-	-	-	-	X	-	-	-	-	-	HORN .. Air - S3L - Three bells forward
6	8186796	-	-	-	-	-	X	-	-	-	-	HORN .. Air - S3J - Two bell forward - One bell reverse
7	8197499	-	-	-	-	-	-	X	-	-	-	HORN .. Air - S3LR - Two bell forward - One bell reverse
8	8193253	-	-	-	-	-	-	-	X	-	-	HORN .. Air - S5TR - Three bell forward - Two bell reverse
9	8202465	-	-	-	-	-	-	-	-	X	-	HORN .. Air - S5T - Five bell forward
10	8198938	2	2	2	3	3	3	3	5	5		DIAPHRAGM ASY. .. Horn - Includes ring
11	8211998	2	2	2	3	3	3	3	5	5		COVER ...Back
13	120229	12	12	12	18	18	18	18	30	30		BOLT .. Back cover - 5/16-18 x 7/8 hex. hd.
14	120214	12	12	12	18	18	18	18	30	30		WASHER .. Lock - 5/16
15	422213	6	6	6	9	9	9	9	15	15		SCREW .. Diaphragm ring - 6-40 x 1/4 rd. hd.
16	8217123	2	2	2	3	3	3	3	5	5		HOUSING .. Diaphragm
17	103456	6	6	6	9	9	9	9	15	15		WASHER .. Lock - 7/16
18	8211999	4	4	4	6	6	6	6	10	10		GASKET
19	108618	6	6	6	9	9	9	9	15	15		BOLT .. 3/8-16 x 2-3/4 hex. hd.
20	8217126	1	-	1	-	1	1	1	1	1		HORN .. #44
21	8217129	-	1	-	-	1	1	1	1	1		HORN .. #25
22	8217128	-	1	-	-	1	1	1	1	1		HORN .. #31
23	8221696	1	-	1	1	-	-	-	-	-		HORN .. #31
24	8218608	-	-	-	1	-	-	-	-	-		HORN .. #37
25	8218607	-	-	-	1	-	-	-	-	-		HORN .. #48
26	8217127	-	-	-	-	-	-	-	1	1		HORN .. #73
27	8217125	-	-	-	-	-	-	-	1	1		HORN .. #55

## AIR HORN OPERATING VALVE

Ref. No.	Part Number	Number Required	Description
-------------	----------------	--------------------	-------------

## VALVE .. Air Operating - Horn Or Whistle

* 1	8088419	1 -	VALVE .. Air operating - Horn or whistle- Original design-See Note
* 2	8088419	- 1	VALVE .. Air operating - Horn or whistle- Improved design - See Note

NOTE: Only the improved design 8088419 valve with redesigned seat and stem will be furnished. However, either design of the 8088419 air operating valve may be replaced by the 8157491 air operating valve, which is illustrated on Plate 2929-2.

## CAP .. Valve Spring

3	8097335	1 1	CAP .. Valve spring
4	8097342	1 1	GASKET .. Cap to body
5	8097329	1 1	SPRING .. Valve
6	8097332	1 1	BALL
7	8148470	- 1	SEAT .. Valve

## STEM .. Valve

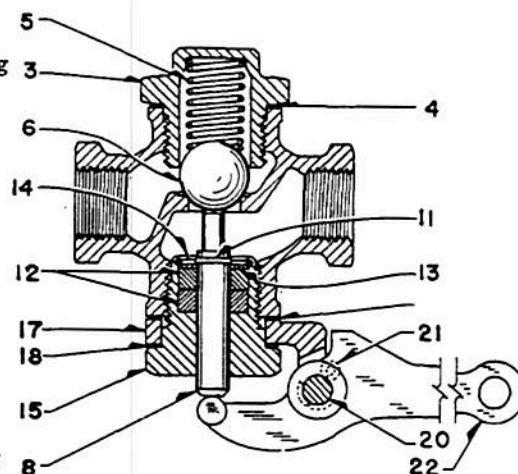
8	8097331	1 -	STEM .. Valve
9	8148473	- 1	STEM .. Valve
10	8148471	- 1	RING .. "O" - Valve stem
11	8097340	1 1	CLIP .. Spring - Valve stem
12	8097337	2 -	RING .. Packing
13	8097339	1 -	WASHER .. Packing ring
14	8097341	1 -	CLIP .. Spring - packing ring
15	8097333	1 -	BUSHING .. Valve stem
16	8148474	- 1	BUSHING .. Valve stem

## YOKE .. Valve Operating Lever

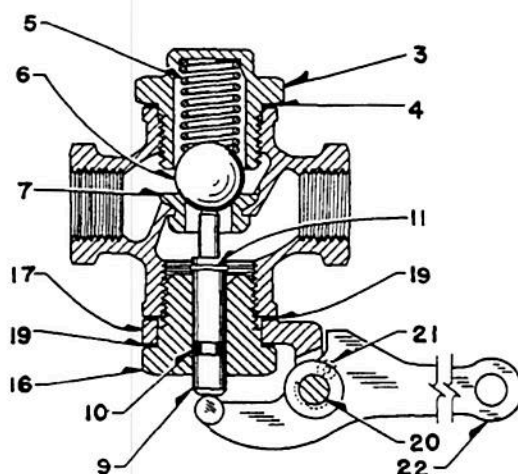
17	8097334	1 1	YOKE .. Valve operating lever
18	8097342	2 -	GASKET .. Yoke to body and stem bushing
19	8048469	- 2	GASKET .. Yoke to body and stem bushing

## LEVER .. Valve Operating

20	8097336	1 1	PIN .. Valve operating lever
21	103373	2 2	PIN .. Cotter - 3/32 in. x 1/2 in. lg.
22	8097330	1 1	LEVER .. Valve operating-Horn or whistle operation
*23	8088420	1 1	LEVER .. Valve operating-Retractable draft gear whistle operation



Original Design



Improved Design

PLATE B2929-1

8087815 8087413 8088418  
JULY, 1961

P. L. No. C2929

## AIR HORN OPERATING VALVE

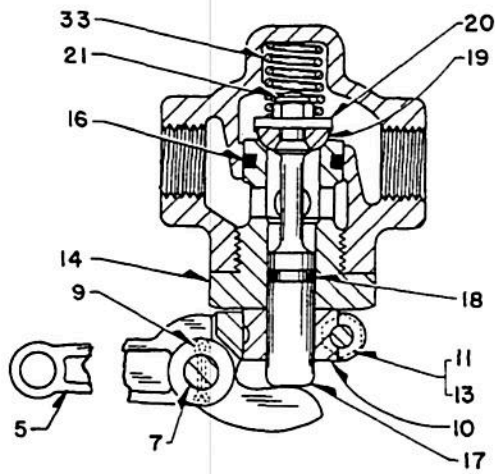
PLATE B2929-2

Ref. No.	Part Number	Number	Required	Description
<b>VALVE .. Horn Operating Air</b>				
1	8157491	A	-	VALVE .. Horn operating air - Non-Modulating - Cable operated
* 1A	8252969	-	B	VALVE .. Horn operating air - Non-Modulating - Hand operated
2	8172295	-	C	VALVE .. Horn operating air - With 1/8 in. choke - Cable operated
* 2A	8254897	-	-	VALVE .. Horn operating air - With 1/8 in. choke - Hand operated
3	8196132	-	-	VALVE .. Horn operating air - With 1/16 in. choke - Cable operated
4	8251037	-	-	VALVE .. Horn operating air - With 1/16 in. choke - Hand operated
<b>LEVER .. Valve Operating</b>				
5	8163447	1	-	LEVER .. Valve operating - Cable operated
6	8253186	-	1	LEVER .. Valve operating - Hand operated
7	8163448	1	1	PIN .. Valve operating lever
8	103372	-	2	PIN .. Cotter - 3/32 in. x 1/2 in. lg.
9	103373	2	2	PIN .. Cotter - 3/32 in. x 3/4 in. lg.
<b>FULCRUM .. Valve Operating Lever</b>				
10	8163450	1	1	FULCRUM .. Valve operating lever
11	179799	1	1	BOLT .. 1/4-20 x 1-1/4 hex. hd. - Replaces 100111 and 180034
12	179801	-	1	BOLT .. 1/4-20 x 1-1/2 hex. hd. - Replaces 100112
13	109084	1	1	NUT .. 1/4-20 hex. - Replaces 117060
<b>SEAT AND STEM .. Valve</b>				
14	8163441	1	1	SEAT .. Valve
15	8188405	-	1	SEAT .. Valve - Formerly 8184405
16	8163442	-	1	RING .. "O" - Valve seat
17	8163443	1	1	STEM ASSEMBLY .. Valve
18	8163444	1	1	RING .. "O" - Valve stem
19	8163445	1	1	DISC .. Valve
20	8163446	1	1	WASHER .. Valve disc
21	8032715	1	1	NUT .. Lock - 1/4-28 hex.
22	8205972	-	-	STEM .. Valve - With 1/16 in. choke
23	8188406	-	1	STEM .. Valve - With 1/8 in. choke
24	8188407	-	1	RING .. "O" - Valve stem
25	8188409	-	1	DISC .. Valve
26	8188410	-	1	WASHER .. Valve disc
27	8188415	-	1	PLUNGER .. Valve stem
28	8189458	-	1	STEM ASSEMBLY .. Secondary valve
29	8188414	-	1	RING .. "O" - Valve stem
30	8188413	-	1	DISC .. Valve
31	8188412	-	1	WASHER .. Valve disc
32	8032811	-	1	NUT .. Lock - 8-32 hex.
<b>SPRING .. Valve Stem</b>				
33	8163449	1	1	SPRING .. Valve stem
34	8188408	-	1	SPRING .. Valve stem

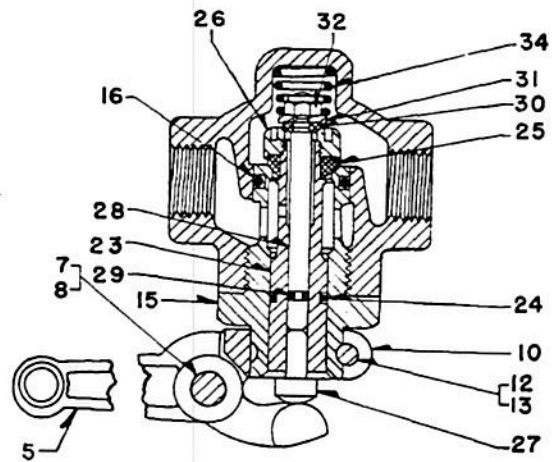


AIR HORN OPERATING VALVE

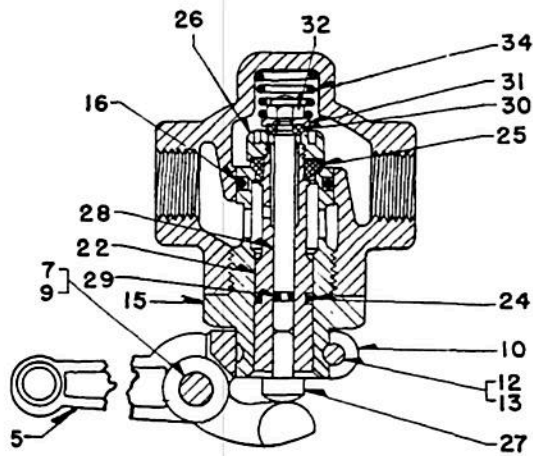
P. L. No. C2929



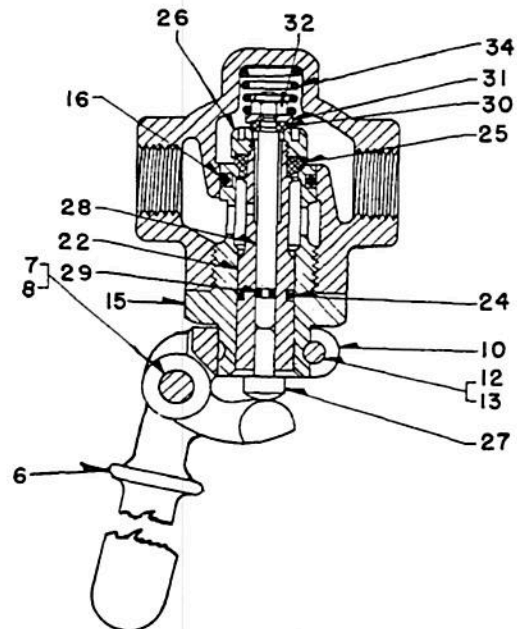
Ref. No. 1



Ref. No. 2



Ref. No. 3



Ref. No. 4

PLATE B2929-2

